



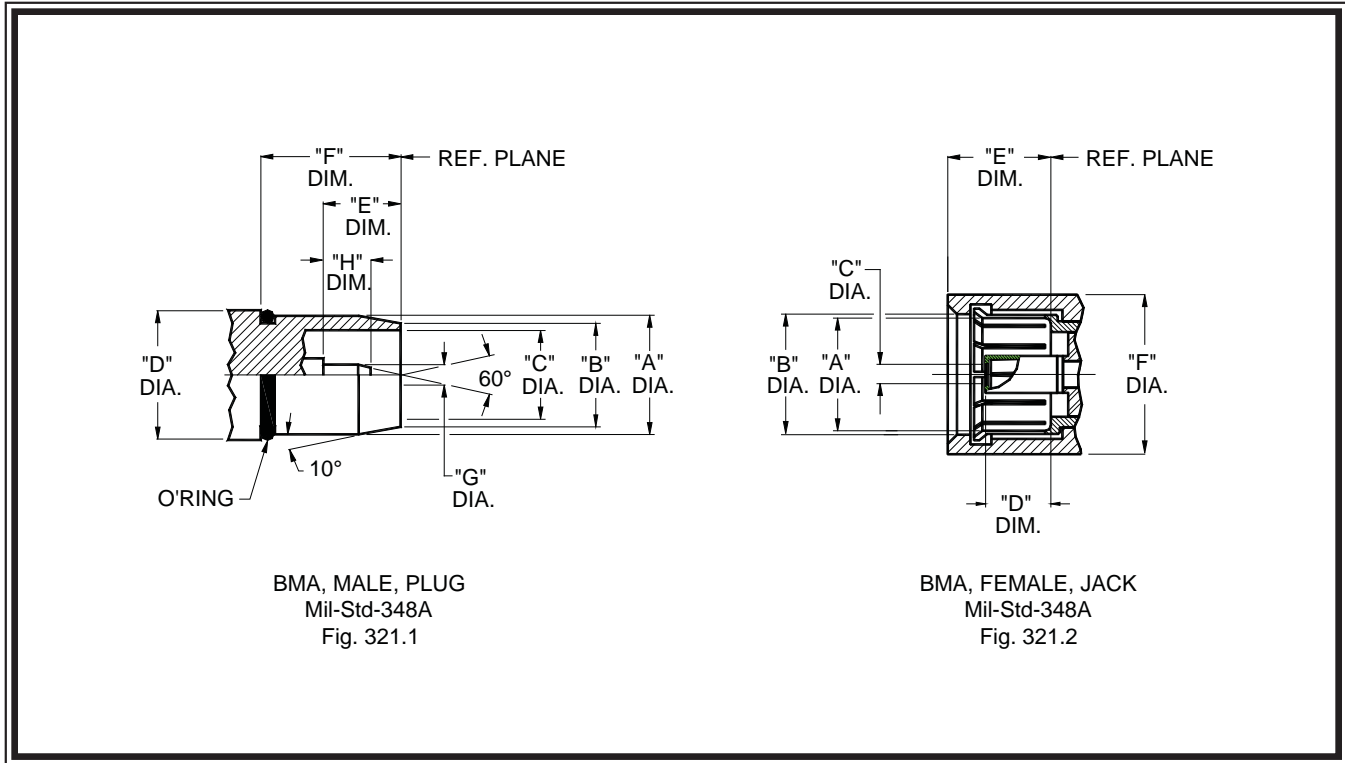
bma



www.dynawave.com

dynawave
INCORPORATED

bma • interface dimensions



male, plug

female, jack

LTR.	INCHES / MILLIMETERS ³			
	MINIMUM		MAXIMUM	
	IN.	MM.	IN.	MM.
A	.209	5.31	.211	5.36
B	-----	-----	.193	4.90
C	-----	-----	.162	4.15
D	-----	-----	.300	7.62
E	.128	3.25	-----	-----
F	.198	5.03	-----	-----
G	.0355	0.90	.0370	0.94
H	-----	-----	.092	2.34
J	-----	-----	-----	-----
K	-----	-----	-----	-----
---	-----	-----	-----	-----

LTR.	INCHES / MILLIMETERS ³			
	MINIMUM		MAXIMUM	
	IN.	MM.	IN.	MM.
A	-----	-----	.200	5.08
B	.225	5.72	-----	-----
C	SEE NOTE 1		SEE NOTE 1	
D	-----	-----	.127	3.23
E	-----	-----	.198	5.03
F	.290	7.37	-----	-----
G	-----	-----	-----	-----
H	-----	-----	-----	-----
J	-----	-----	-----	-----
K	-----	-----	-----	-----
---	-----	-----	-----	-----

Notes:

1. I.D. to meet VSWR and contact resistance when mated with .0370/.0355 Dia. inches (0.94 / 0.90) Dia. millimeter pin.
2. When fully engaged, the two reference planes must coincide with metal-to-metal contact.
3. Metric equivalents (to the nearest 0.01mm) are given to general information only and are based on 1.0 millimeter=.03937 inches.
4. These dimensions are subject to change according to the latest revisions of MIL-C-39012 and MIL-STD-348A.

bma specifications

The specifications below are general specifications for all BMA connectors. Specific specifications for VSWR, insertion loss and R.F. leakage for each connector is available from Dynawave upon request. Specifications in the following table are recommended for any procurement documents or drawings

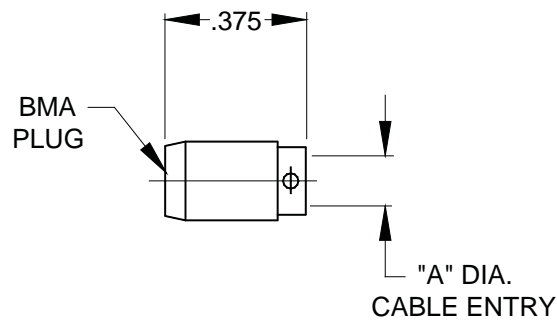
In the event of any conflict between these specifications and General Specification MIL-C-39012 these specifications shall govern. These specifications are subject to change according to the latest revision of MIL-C-39012.

REQUIREMENT	MIL-C-39012 PARAGRAPH	SPECIFICATIONS
GENERAL		
Material	3.3	Steel corrosion resistant per ASTM- A- 581, Type 303, Cond. A Beryllium copper per ASTM-B196/B, 196M, Copper Alloy TFE Fluorocarbon per ASTM-D-1710 Nitrile, (Buna-N) per MIL-P-25732
Finish	3.3.1	Center contacts shall be gold plated to a minimum thickness of .0005-inch in accordance with ATSM-B-488, Type I, Code C. All other metal parts shall be finished so as to provide a connector which meets the corrosion requirements of this table.
Design	3.4	The design shall be such that the outline dimensions in this catalog are met. In addition the assembled connector shall meet the interface dimensions.
ELECTRICAL		
Insulation Resistance	3.11	The insulation resistance shall not be less than 5,000 megohms
Dielectric Withstanding Voltage	3.17	The magnitude of the test voltage shall be 1,000 volts rms at sea level
RF High Potential Withstanding Voltage	3.23	The RF high potential withstanding voltage is 670 volts rms at 5 MHz. Leakage is not applicable.
Contact Resistance	3.18	The center contact resistance drop shall not exceed 3.0 milliohms and the outer contact resistance drop shall not exceed 2.0 milliohms.
Voltage Standing Wave Ratio (VSWR)	3.14	See applicable connector specifications.
RF Leakage	3.26	See applicable connector specifications.
Insertion Loss	3.27	See applicable connector specification.
MECHANICAL		
Force to Engage and Disengage	3.5.1	The Engagement Force is 3.0 Lbs. maximum. The Disengagement Force is 1.5 Lbs. maximum.
Coupling Nut Retention Force and Proof Torque.		Not applicable .
Cable Retention force requirements shall not apply.	3.24	The force applied shall be 60 pounds minimum. The cable twisting and bending
Mating Characteristics	3.7	See interface dimensions shown on Page 124. Applicable to Females only: over size pin .0372 minimum diameter .045 deep; Insertion force 3 pounds maximum with .0375 minimum diameter pin; withdrawal force 1 ounce minimum with 0355 maximum diameter pin.
Connector Durability	3.15	The connector to be tested and its mating connector shall be subjected to 500 insertions and withdrawal cycles at 12 cycles per minute maximum. The connector shall show no evidence of mechanical failure and connector shall meet the mating characteristic requirements.
ENVIRONMENTAL		
Vibration	3.18	Specification MIL-STD-202, Method 204, Test Condition D.
Shock	3.19	Specification MIL-STD-202, Method 213, Test Condition I.
Thermal Shock	3.20	Specification MIL-STD-202, Method 107, Test Condition B except high temperture shall be + 200°C.
Recommended Mating Torque		Not applicable.
Corrosion (Salt Spray)	3.13	Specification MIL-STD-202, Method 101, Test Condition B. The salt solution shall be five per cent.
Moisture Resistance	3.21	Specification MIL-STD-202, Method 106. Step 7b (vibration) shall be omitted. Insulation resistance shall be 200 megohms minimum within 5 minutes of removal from humidity.
Corona Level	3.22	The connector shall not exhibit breakdown (corona) when the applied voltage is 250 volts rms and the altitude is 70,000 feet.
Complete specifications on every connector in this catalog are available from Dynawave		

Specifications are subject to change without notice

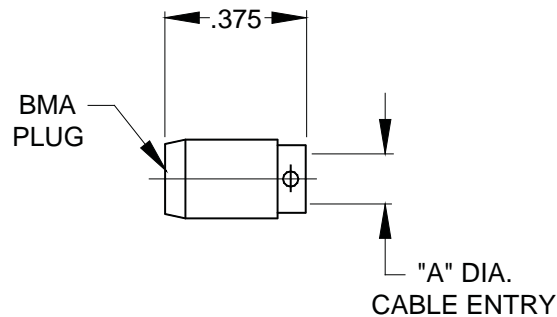
bma • semi rigid cable connectors

male, plug, straight, with center contact



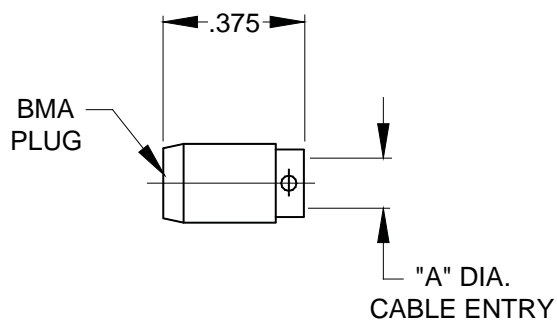
PART NUMBER	"A" DIA.	CABLE TYPE	MATERIAL TYPE	FREQUENCY RANGE
2800-4120-2700	.144 MIN.	RG 402/U (.141)	BRASS	DC - 22.0 GHz.
2800-4120-6400	.144 MIN.	RG 402/U (.141)	STAINLESS STEEL	DC - 22.0 GHz.

male, plug, straight, without center contact



PART NUMBER	"A" DIA.	CABLE TYPE	MATERIAL TYPE	FREQUENCY RANGE
2800-4120-2740	.144 MIN.	RG 402/U (.141)	BRASS	DC - 22.0 GHz.
2800-4120-6440	.144 MIN.	RG 402/U (.141)	STAINLESS STEEL	DC - 22.0 GHz.

male, plug, straight, low loss, with center contact

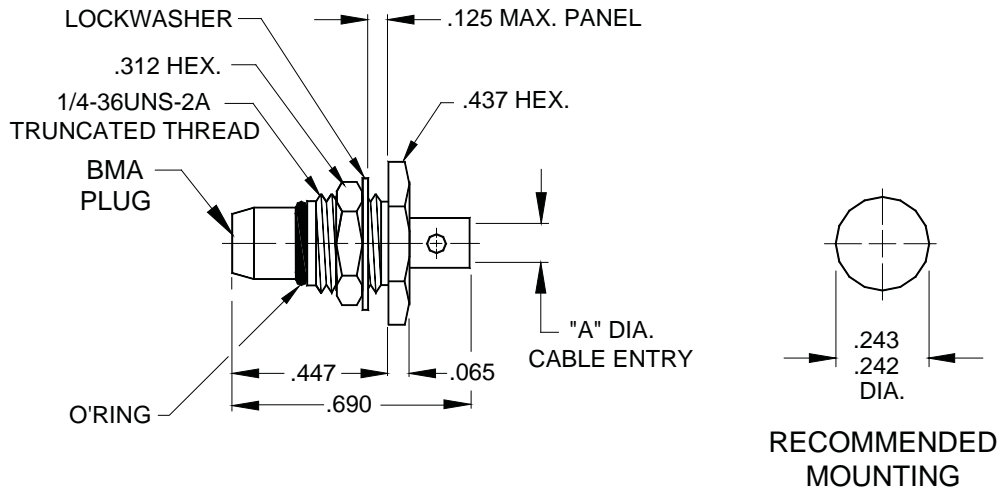


PART NUMBER	"A" DIA.	CABLE TYPE	MATERIAL TYPE	FREQUENCY RANGE
2800-4220-2700	.144 MIN.	RG 402/U (.141)	BRASS	DC - 22.0 GHz.
2800-4220-6400	.144 MIN.	RG 402/U (.141)	STAINLESS STEEL	DC - 22.0 GHz.

Specifications are subject to change without notice

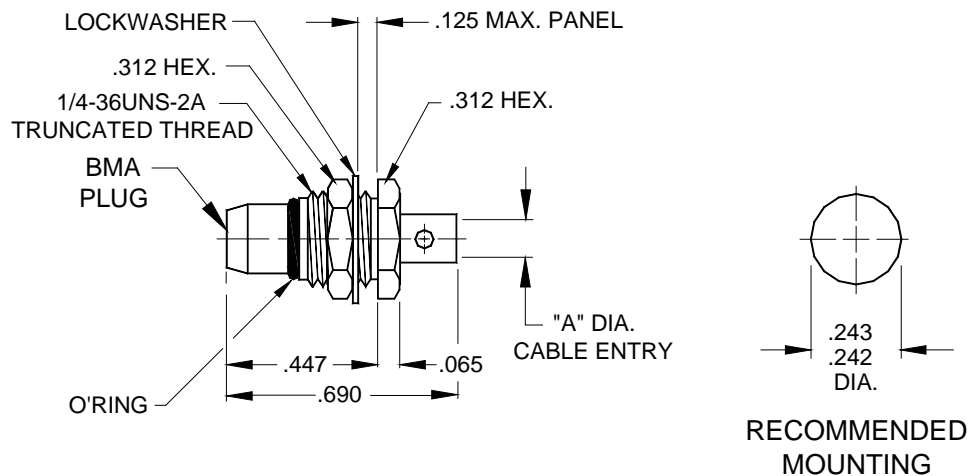
bma • semi rigid cable connectors

male, plug, bulkhead mount



PART NUMBER	"A" DIA.	CABLE TYPE	MATERIAL TYPE	FREQUENCY RANGE
2810-8521-6401	.089 MIN.	RG 405/U (.085)	STAINLESS STEEL	DC - 18.0 GHz.
2810-4121-6450	.144 MIN.	RG 402/U (.141)	STAINLESS STEEL	DC - 18.0 GHz.

male, plug, bulkhead mount, low loss cable

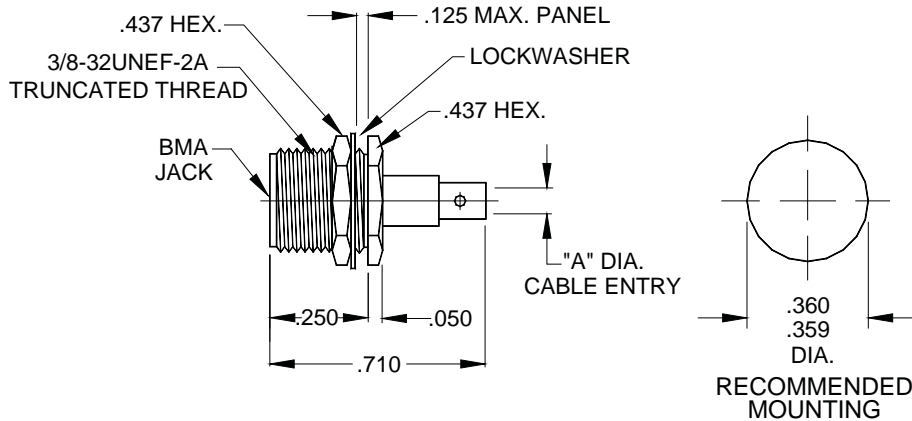


PART NUMBER	"A" DIA.	CABLE TYPE	MATERIAL TYPE	FREQUENCY RANGE
2810-8921-6400	.089 MIN.	.085 LOW LOSS	STAINLESS STEEL	DC - 26.5 GHz.
2810-4921-6400	.144 MIN.	.141 LOW LOSS	STAINLESS STEEL	DC - 26.5 GHz.

Specifications are subject to change without notice

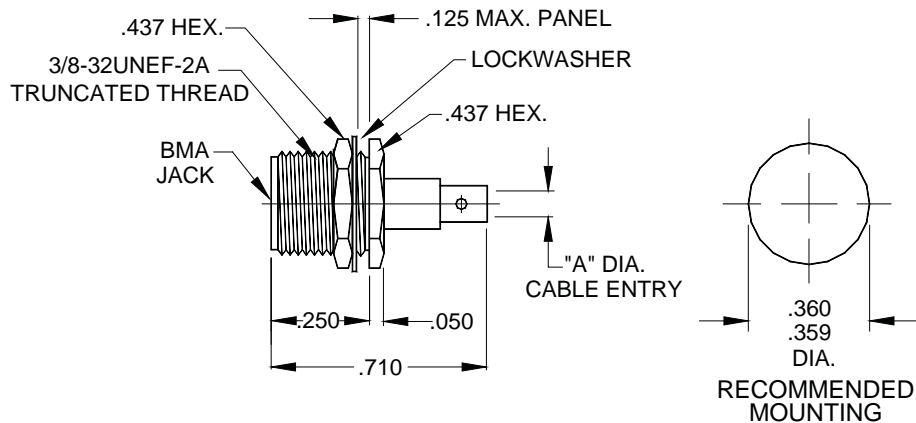
bma • semi rigid cable connectors

female, jack, bulkhead mount



PART NUMBER	"A" DIA.	CABLE TYPE	MATERIAL TYPE	FREQUENCY RANGE
6710-8521-6450	.089 MIN.	RG 405/U (.085)	STAINLESS STEEL	DC - 20.0 GHz.
6710-4121-6450	.144 MIN.	RG 402/U (.141)	STAINLESS STEEL	DC - 20.0 GHz.

female, jack, bulkhead mount, low loss cable

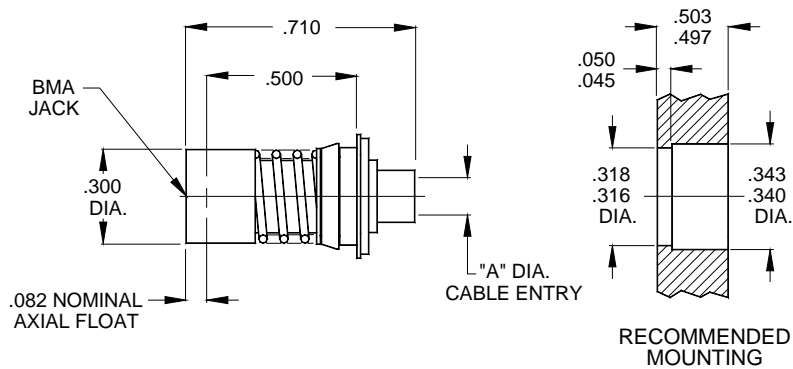


PART NUMBER	"A" DIA.	CABLE TYPE	MATERIAL TYPE	FREQUENCY RANGE
6710-8921-6400	.089 MIN.	.085 LOW LOSS	STAINLESS STEEL	DC - 20.0 GHz.
6710-4921-6400	.144 MIN.	.141 LOW LOSS	STAINLESS STEEL	DC - 20.0 GHz.

Specifications are subject to change without notice

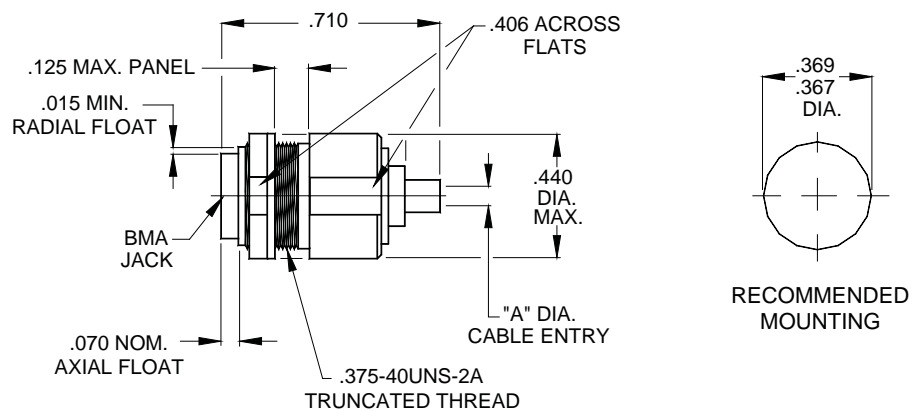
bma • semi rigid cable connectors

female, jack, bulkhead, straight, float mount



PART NUMBER	"A" DIA.	CABLE TYPE	MATERIAL TYPE	FREQUENCY RANGE
6760-8521-6441	.089 MIN.	RG 405/U (.085)	STAINLESS STEEL	DC - 18.0 GHz.
6760-4121-6467	.144 MIN.	RG 402/U (.141)	STAINLESS STEEL	DC - 18.0 GHz.

female, jack, bulkhead, straight, float mount

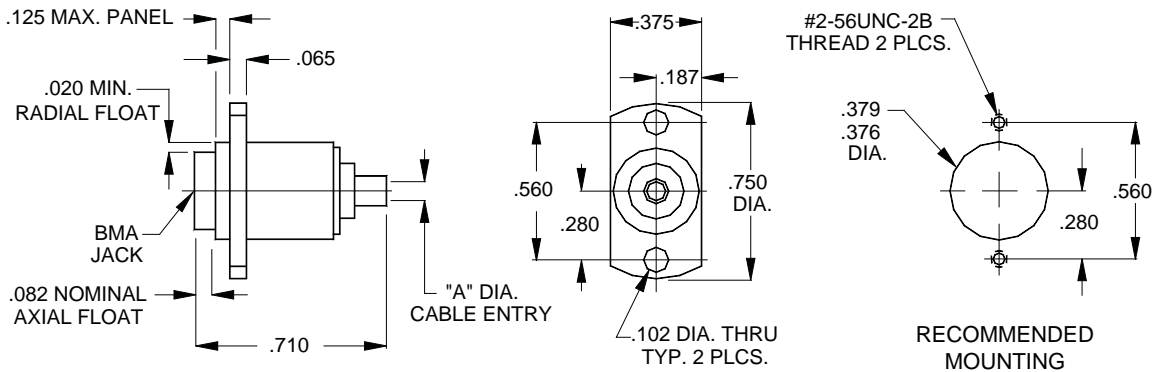


PART NUMBER	"A" DIA.	CABLE TYPE	MATERIAL TYPE	FREQUENCY RANGE
6760-8529-6299	.089 MIN.	RG 405/U (.085)	STAINLESS STEEL	DC - 18.0 GHz.
6760-4129-6299	.144 MIN.	RG 402/U (.141)	STAINLESS STEEL	DC - 18.0 GHz.

Specifications are subject to change without notice

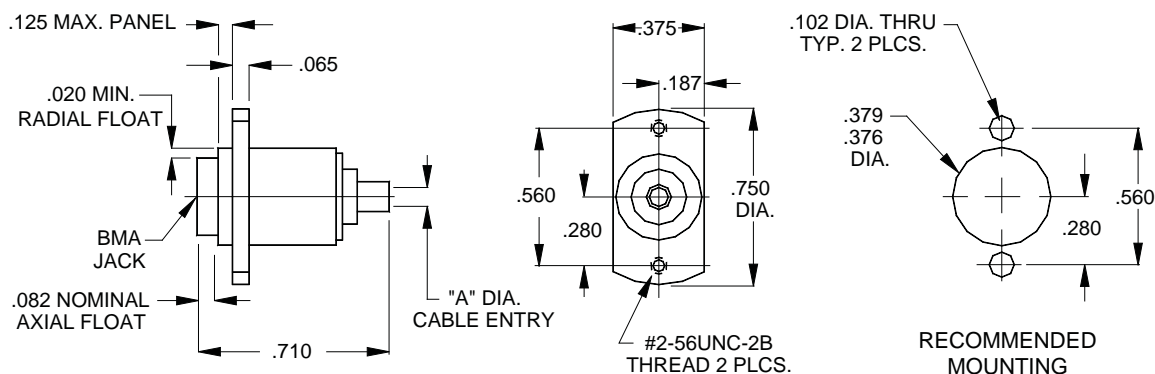
bma • semi rigid cable connectors

female, jack, 2 hole flange, float mount, threaded panel



PART NUMBER	"A" DIA.	CABLE TYPE	MATERIAL TYPE	FREQUENCY RANGE
6762-8521-6256	.089 MIN.	RG 405/U (.085)	STAINLESS STEEL	DC - 18.0 GHz.
6762-4121-6256	.144 MIN.	RG 402/U (.141)	STAINLESS STEEL	DC - 18.0 GHz.

female, jack, 2 hole flange, float mount, threaded flange

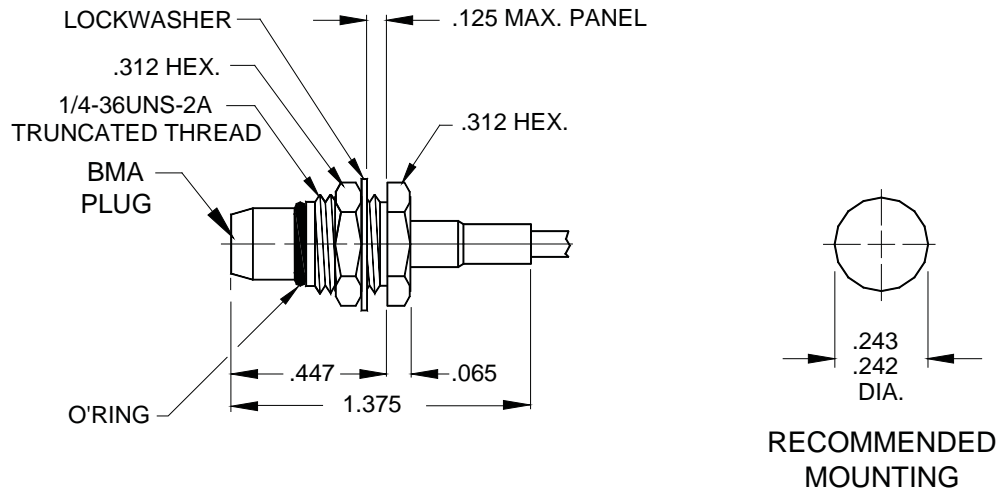


PART NUMBER	"A" DIA.	CABLE TYPE	MATERIAL TYPE	FREQUENCY RANGE
6762-8521-6257	.089 MIN.	RG 405/U (.085)	STAINLESS STEEL	DC - 18.0 GHz.
6762-4121-6257	.144 MIN.	RG 402/U (.141)	STAINLESS STEEL	DC - 18.0 GHz.

Specifications are subject to change without notice

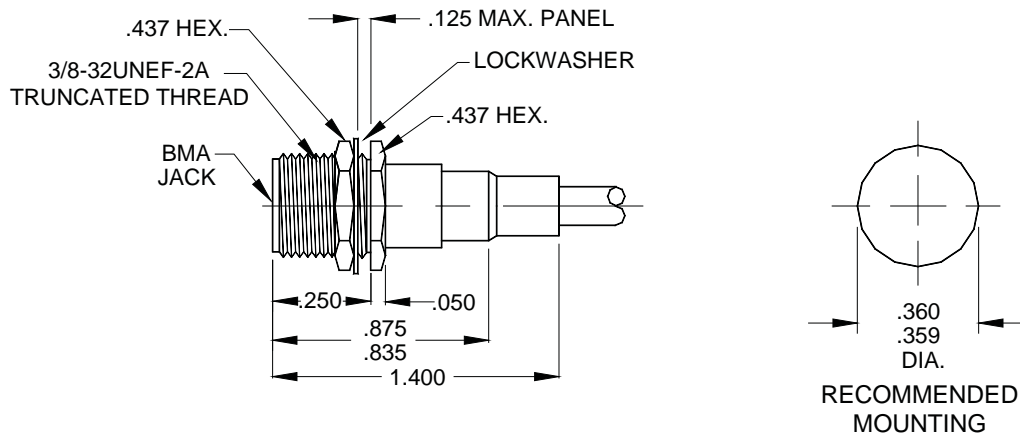
bma • flexible cable connectors

male, plug, bulkhead mount, crimp attachment



PART NUMBER	CABLE TYPE	MATERIAL TYPE	FREQUENCY RANGE
2810-1630-6231	RG 174/U, 179, 187, 188, 316	STAINLESS STEEL	DC - 3.0 GHz.
2810-1830-6231	RG 316 DOUBLE BRAID	STAINLESS STEEL	DC - 12.4 GHz.
2810-4230-6231	RG 58/U, 142, 223, 400	STAINLESS STEEL	DC - 12.4 GHz.

female, jack, bulkhead mount, crimp attachment



PART NUMBER	CABLE TYPE	MATERIAL TYPE	FREQUENCY RANGE
6710-1630-6231	RG 174/U, 179, 187, 188, 316	STAINLESS STEEL	DC - 3.0 GHz.
6710-1830-6231	RG 316 DOUBLE BRAID	STAINLESS STEEL	DC - 12.4 GHz.
6710-4230-6231	RG 58/U, 142, 223, 400	STAINLESS STEEL	DC - 12.4 GHz.

Specifications are subject to change without notice

bma • field replaceable connectors

male, plug, 2 hole flange mount

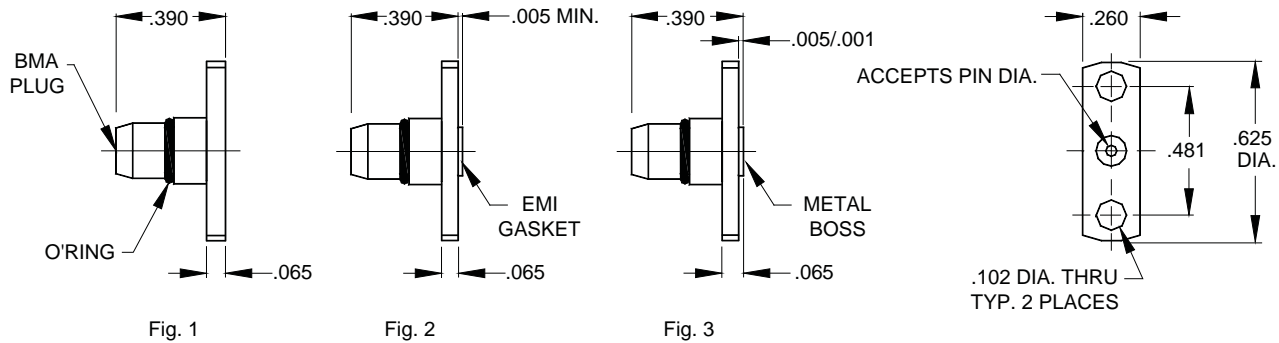


Fig. 1

Fig. 2

Fig. 3

PART NUMBER	Fig.	ACCEPTS PIN DIA	MATERIAL TYPE	FREQUENCY RANGE
2852-0081-6215	1	.016/.011	STAINLESS STEEL	DC - 26.5 GHz.
2852-0781-6215	2	.016/.011	STAINLESS STEEL	DC - 26.5 GHz.
2852-0881-6215	3	.016/.011	STAINLESS STEEL	DC - 26.5 GHz.
2852-0081-6220	1	.021/.017	STAINLESS STEEL	DC - 26.5 GHz.
2852-0781-6220	2	.021/.017	STAINLESS STEEL	DC - 26.5 GHz.
2852-0881-6220	3	.021/.017	STAINLESS STEEL	DC - 26.5 GHz.
2852-0081-6236	1	.037/.035	STAINLESS STEEL	DC - 26.5 GHz.
2852-0781-6236	2	.037/.035	STAINLESS STEEL	DC - 26.5 GHz.
2852-0881-6236	3	.037/.035	STAINLESS STEEL	DC - 26.5 GHz.

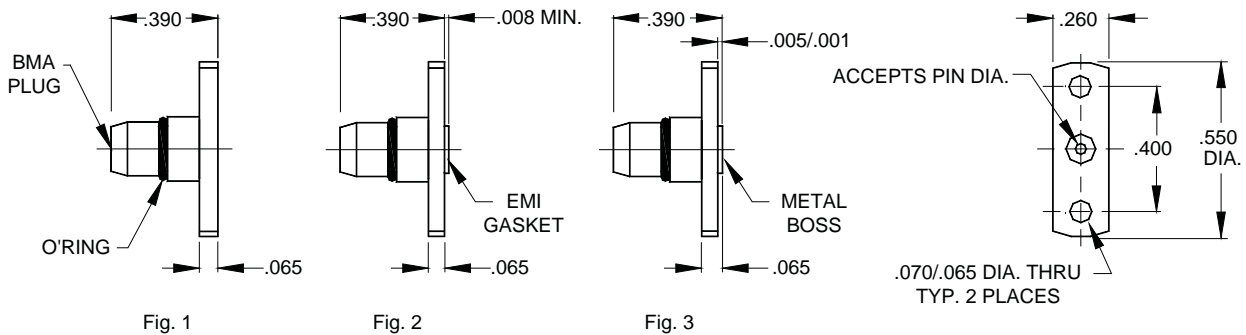


Fig. 1

Fig. 2

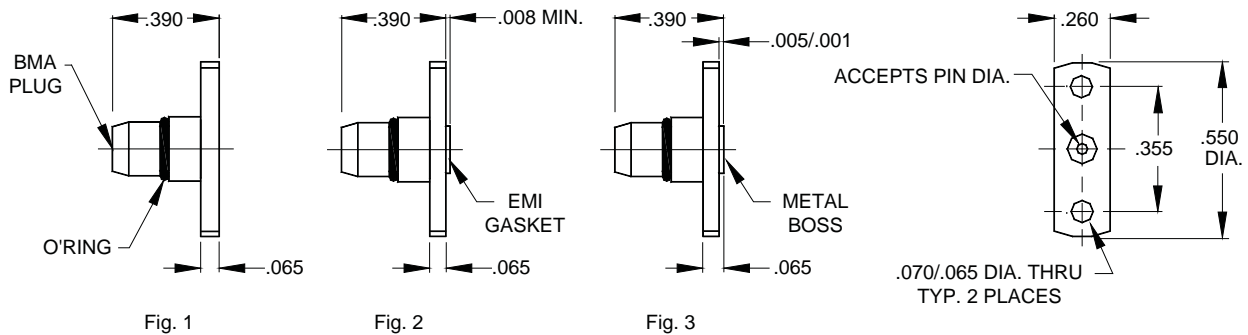
Fig. 3

PART NUMBER	Fig.	ACCEPTS PIN DIA	MATERIAL TYPE	FREQUENCY RANGE
2852-0081-6214	1	.016/.011	STAINLESS STEEL	DC - 26.5 GHz.
2852-0781-6214	2	.016/.011	STAINLESS STEEL	DC - 26.5 GHz.
2852-0881-6214	3	.016/.011	STAINLESS STEEL	DC - 26.5 GHz.
2852-0081-6224	1	.021/.017	STAINLESS STEEL	DC - 26.5 GHz.
2852-0781-6224	2	.021/.017	STAINLESS STEEL	DC - 26.5 GHz.
2852-0881-6224	3	.021/.017	STAINLESS STEEL	DC - 26.5 GHz.
2852-0081-6246	1	.037/.035	STAINLESS STEEL	DC - 26.5 GHz.
2852-0781-6246	2	.037/.035	STAINLESS STEEL	DC - 26.5 GHz.
2852-0881-6246	3	.037/.035	STAINLESS STEEL	DC - 26.5 GHz.

Specifications are subject to change without notice

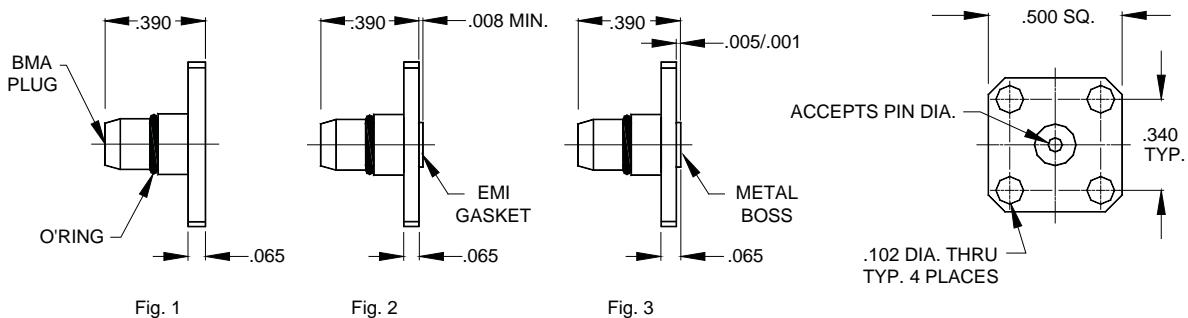
bma • field replaceable connectors

male, plug, 2 hole flange mount



PART NUMBER	Fig.	ACCEPTS PIN DIA	MATERIAL TYPE	FREQUENCY RANGE
2852-0081-6213	1	.016/.011	STAINLESS STEEL	DC - 26.5 GHz.
2852-0781-6213	2	.016/.011	STAINLESS STEEL	DC - 26.5 GHz.
2852-0881-6213	3	.016/.011	STAINLESS STEEL	DC - 26.5 GHz.
2852-0081-6223	1	.021/.017	STAINLESS STEEL	DC - 26.5 GHz.
2852-0781-6223	2	.021/.017	STAINLESS STEEL	DC - 26.5 GHz.
2852-0881-6223	3	.021/.017	STAINLESS STEEL	DC - 26.5 GHz.

male, plug, 4 hole flange mount

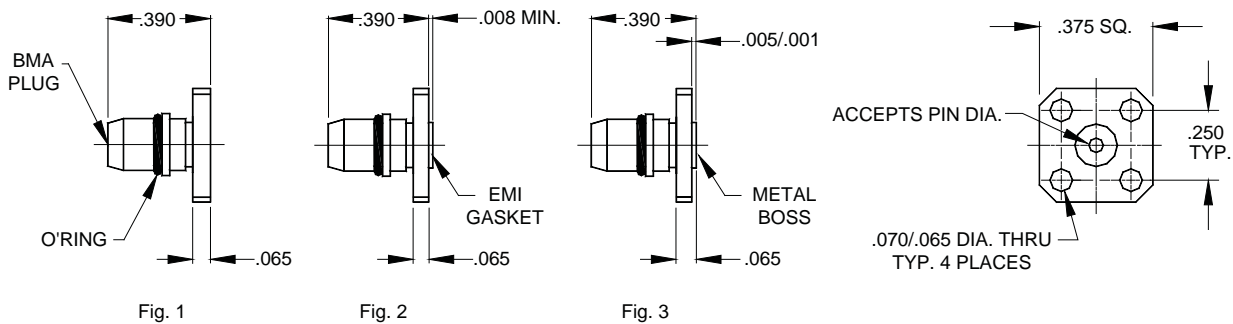


PART NUMBER	Fig.	ACCEPTS PIN DIA	MATERIAL TYPE	FREQUENCY RANGE
2854-0081-6215	1	.016/.011	STAINLESS STEEL	DC - 26.5 GHz.
2854-0781-6215	2	.016/.011	STAINLESS STEEL	DC - 26.5 GHz.
2854-0881-6215	3	.016/.011	STAINLESS STEEL	DC - 26.5 GHz.
2854-0081-6220	1	.021/.017	STAINLESS STEEL	DC - 26.5 GHz.
2854-0781-6220	2	.021/.017	STAINLESS STEEL	DC - 26.5 GHz.
2854-0881-6220	3	.021/.017	STAINLESS STEEL	DC - 26.5 GHz.
2854-0081-6236	1	.037/.035	STAINLESS STEEL	DC - 26.5 GHz.
2854-0781-6236	2	.037/.035	STAINLESS STEEL	DC - 26.5 GHz.
2854-0881-6236	3	.037/.035	STAINLESS STEEL	DC - 26.5 GHz.

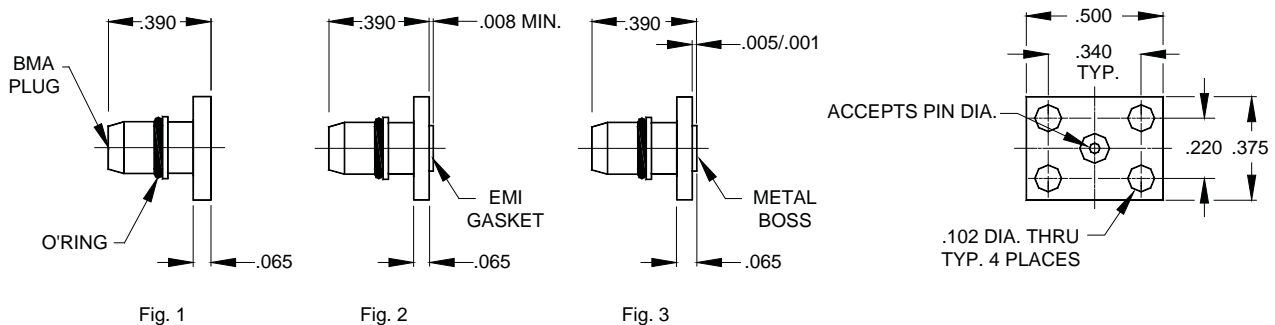
Specifications are subject to change without notice

bma • field replaceable connectors

male, plug, 4 hole flange mount



PART NUMBER	Fig.	ACCEPTS PIN DIA	MATERIAL TYPE	FREQUENCY RANGE
2854-0081-6217	1	.016/.011	STAINLESS STEEL	DC - 26.5 GHz.
2854-0781-6217	2	.016/.011	STAINLESS STEEL	DC - 26.5 GHz.
2854-0881-6217	3	.016/.011	STAINLESS STEEL	DC - 26.5 GHz.
2854-0081-6227	1	.021/.017	STAINLESS STEEL	DC - 26.5 GHz.
2854-0781-6227	2	.021/.017	STAINLESS STEEL	DC - 26.5 GHz.
2854-0881-6227	3	.021/.017	STAINLESS STEEL	DC - 26.5 GHz.
2854-0081-6237	1	.037/.035	STAINLESS STEEL	DC - 26.5 GHz.
2854-0781-6237	2	.037/.035	STAINLESS STEEL	DC - 26.5 GHz.
2854-0881-6237	3	.037/.035	STAINLESS STEEL	DC - 26.5 GHz.

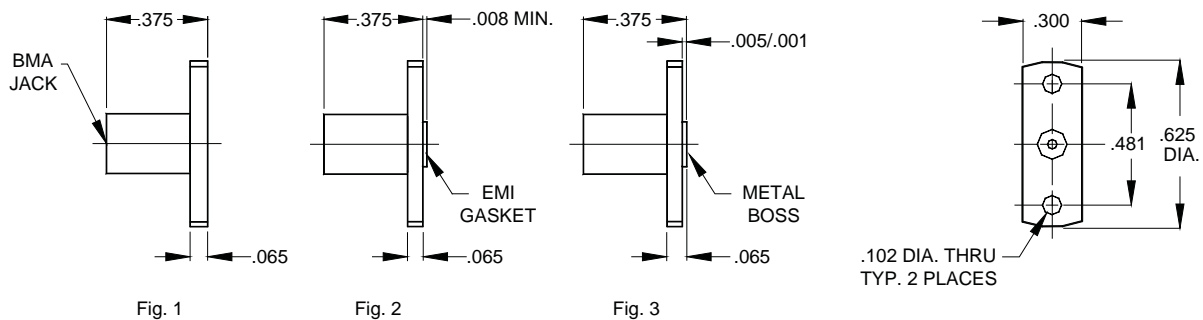


PART NUMBER	Fig.	ACCEPTS PIN DIA	MATERIAL TYPE	FREQUENCY RANGE
2854-0081-6219	1	.016/.011	STAINLESS STEEL	DC - 26.5 GHz.
2854-0781-6219	2	.016/.011	STAINLESS STEEL	DC - 26.5 GHz.
2854-0881-6219	3	.016/.011	STAINLESS STEEL	DC - 26.5 GHz.
2854-0081-6229	1	.021/.017	STAINLESS STEEL	DC - 26.5 GHz.
2854-0781-6229	2	.021/.017	STAINLESS STEEL	DC - 26.5 GHz.
2854-0881-6229	3	.021/.017	STAINLESS STEEL	DC - 26.5 GHz.
2854-0081-6239	1	.037/.035	STAINLESS STEEL	DC - 26.5 GHz.
2854-0781-6239	2	.037/.035	STAINLESS STEEL	DC - 26.5 GHz.
2854-0881-6239	3	.037/.035	STAINLESS STEEL	DC - 26.5 GHz.

Specifications are subject to change without notice

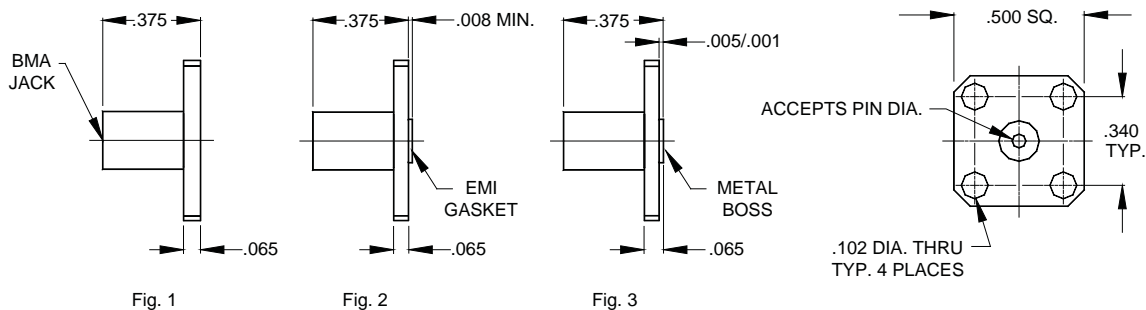
bma • field replaceable connectors

female, jack, 2 hole flange mount



PART NUMBER	Fig.	ACCEPTS PIN DIA	MATERIAL TYPE	FREQUENCY RANGE
6752-0081-6215	1	.016/.011	STAINLESS STEEL	DC - 26.5 GHz.
6752-0781-6215	2	.016/.011	STAINLESS STEEL	DC - 26.5 GHz.
6752-0881-6215	3	.016/.011	STAINLESS STEEL	DC - 26.5 GHz.
6752-0081-6220	1	.021/.017	STAINLESS STEEL	DC - 26.5 GHz.
6752-0781-6220	2	.021/.017	STAINLESS STEEL	DC - 26.5 GHz.
6752-0881-6220	3	.021/.017	STAINLESS STEEL	DC - 26.5 GHz.
6752-0081-6236	1	.037/.035	STAINLESS STEEL	DC - 26.5 GHz.
6752-0781-6236	2	.037/.035	STAINLESS STEEL	DC - 26.5 GHz.
6752-0881-6236	3	.037/.035	STAINLESS STEEL	DC - 26.5 GHz.

female, jack, 4 hole flange mount

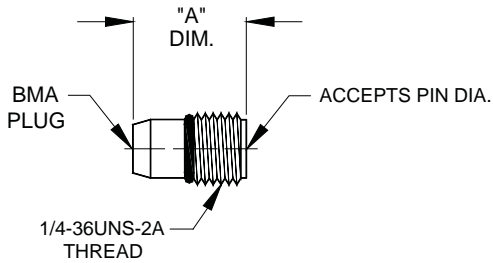


PART NUMBER	Fig.	ACCEPTS PIN DIA	MATERIAL TYPE	FREQUENCY RANGE
6754-0081-6214	1	.016/.011	STAINLESS STEEL	DC - 26.5 GHz.
6754-0781-6214	2	.016/.011	STAINLESS STEEL	DC - 26.5 GHz.
6754-0881-6214	3	.016/.011	STAINLESS STEEL	DC - 26.5 GHz.
6754-0081-6224	1	.021/.017	STAINLESS STEEL	DC - 26.5 GHz.
6754-0781-6224	2	.021/.017	STAINLESS STEEL	DC - 26.5 GHz.
6754-0881-6224	3	.021/.017	STAINLESS STEEL	DC - 26.5 GHz.
6754-0081-6246	1	.037/.035	STAINLESS STEEL	DC - 26.5 GHz.
6754-0781-6246	2	.037/.035	STAINLESS STEEL	DC - 26.5 GHz.
6754-0881-6246	3	.037/.035	STAINLESS STEEL	DC - 26.5 GHz.

Specifications are subject to change without notice

bma • field replaceable connectors

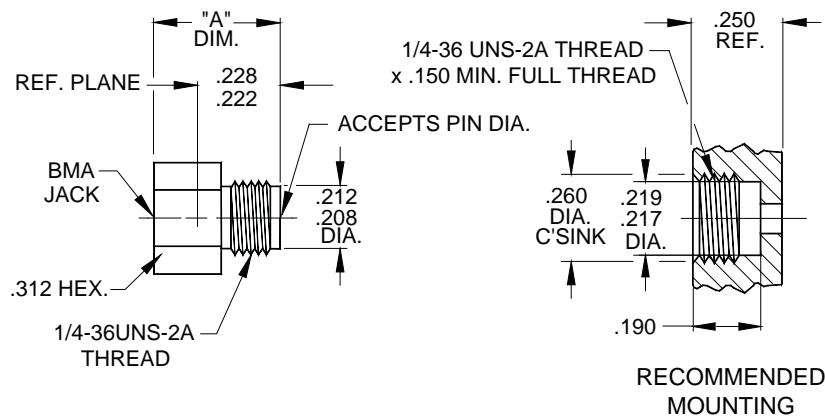
male, plug, thread-in



TORQUE TOOL : 28-TORQUE-10

PART NUMBER	ACCEPTS PIN DIA	"A" DIM.	MATERIAL TYPE	FREQUENCY RANGE
2830-0081-6214	.016/.011	.362	STAINLESS STEEL	DC - 26.5 GHz.
2830-0081-6221	.021-.017	.362	STAINLESS STEEL	DC - 26.5 GHz.
2830-0081-6215	.016/.011	.390	STAINLESS STEEL	DC - 26.5 GHz.
2830-0081-6220	.021/.017	.390	STAINLESS STEEL	DC - 26.5 GHz.
2830-0081-6216	.016/011	.405	STAINLESS STEEL	DC - 26.5 GHz.
2830-0081-6219	.021/.017	.405	STAINLESS STEEL	DC - 26.5 GHz.

female, jack, thread-in

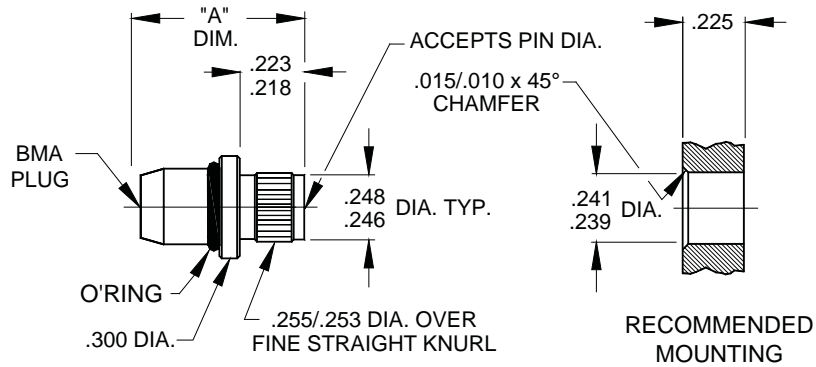


PART NUMBER	ACCEPTS PIN DIA	"A" DIM.	MATERIAL TYPE	FREQUENCY RANGE
6730-0081-6215	.016/.011	.421	STAINLESS STEEL	DC - 26.5 GHz.
6730-0081-6220	.021-.017	.421	STAINLESS STEEL	DC - 26.5 GHz.

Specifications are subject to change without notice

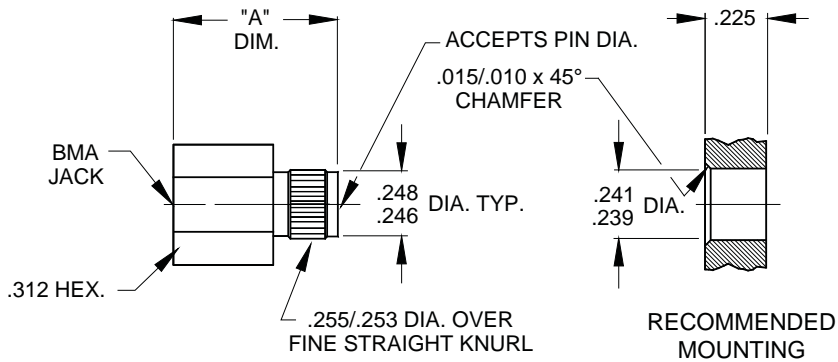
bma • field replaceable connectors

male, plug, press-in



PART NUMBER	ACCEPTS PIN DIA	"A" DIM.	MATERIAL TYPE	FREQUENCY RANGE
2840-0081-6215	.016/.011	.460	STAINLESS STEEL	DC - 26.5 GHz.
2840-0081-6220	.021-.017	.460	STAINLESS STEEL	DC - 26.5 GHz.
2840-0081-6236	.037/.035	.460	STAINLESS STEEL	DC - 26.5 GHz.

female, jack, press-in

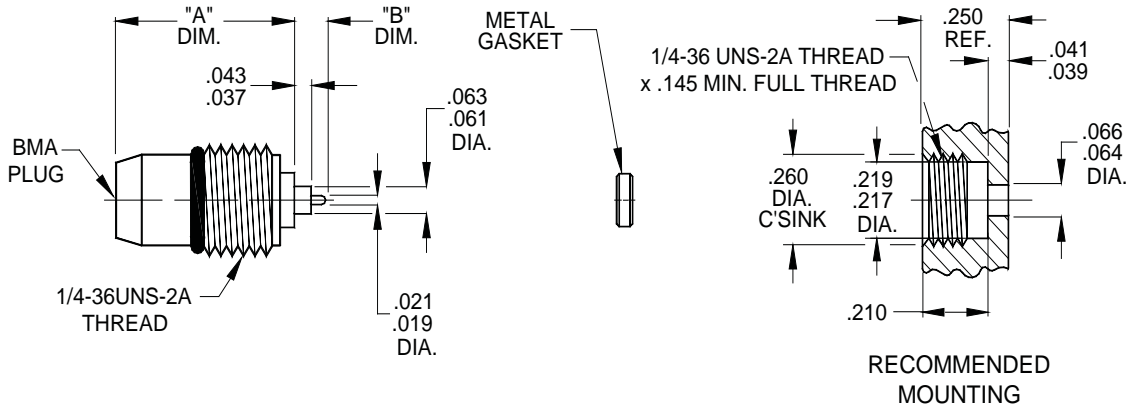


PART NUMBER	ACCEPTS PIN DIA	"A" DIM.	MATERIAL TYPE	FREQUENCY RANGE
6740-0081-6215	.016/.011	.530	STAINLESS STEEL	DC - 26.5 GHz.
6740-0081-6220	.021-.017	.530	STAINLESS STEEL	DC - 26.5 GHz.
6740-0081-6236	.037/.035	.530	STAINLESS STEEL	DC - 26.5 GHz.

Specifications are subject to change without notice

bma • hermetic connectors

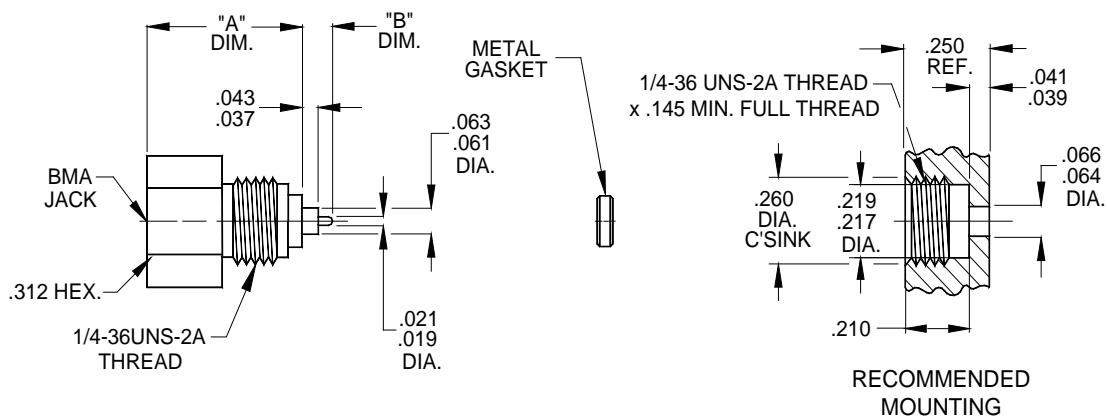
male, plug, thread-in “sparkplug”



TORQUE TOOL : 28-TORQUE-22

PART NUMBER	"A" DIM	"B" DIM.	MATERIAL TYPE	FREQUENCY RANGE
2830-0431-6422	.41	.058	STAINLESS STEEL	DC - 26.5 GHz.
2830-0431-6420	.41	.080	STAINLESS STEEL	DC - 26.5 GHz.

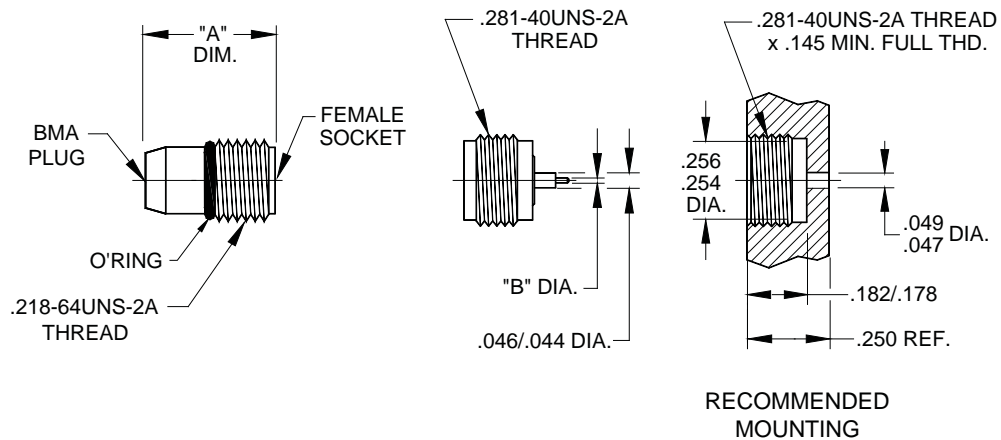
female, jack, thread-in “sparkplug”



PART NUMBER	"A" DIM	"B" DIM.	MATERIAL TYPE	FREQUENCY RANGE
6730-0431-6422	.450	.058	STAINLESS STEEL	DC - 26.5 GHz.
6730-0431-6420	.450	.080	STAINLESS STEEL	DC - 26.5 GHz.

bma • hermetic connectors

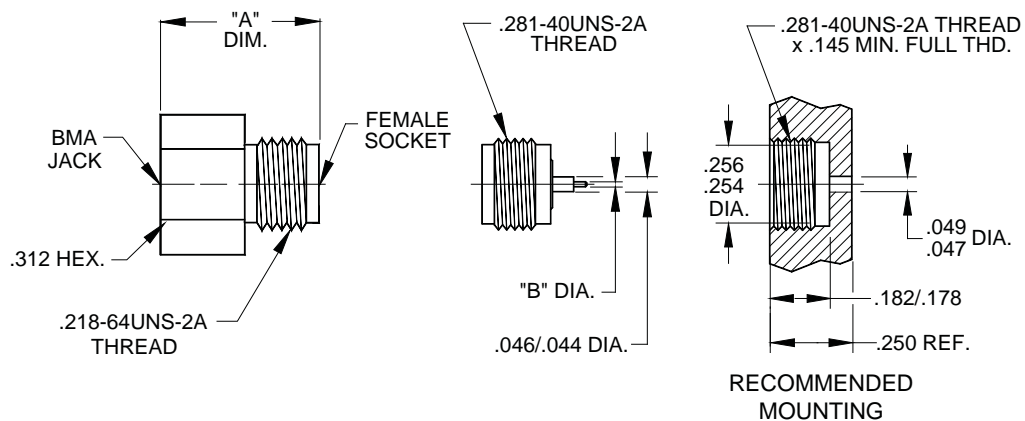
male, plug, thread-in, knife edge, field replaceable, “sparkplug”



TORQUE TOOL : 28-TORQUE-22

PART NUMBER	“A” DIM.	“B” DIM.	MATERIAL TYPE	FREQUENCY RANGE
2833-0431-6416	.360	.015	STAINLESS STEEL	DC - 26.5 GHz..

female, jack, thread-in, knife edge, field replaceable, “sparkplug”

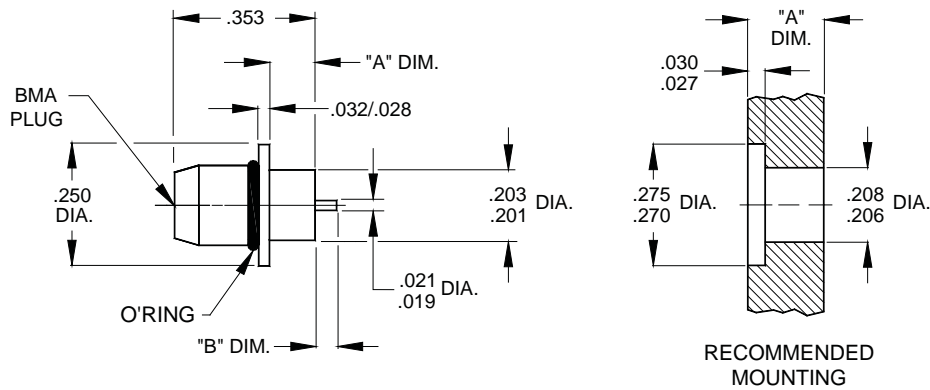


PART NUMBER	“A” DIM.	“B” DIM.	MATERIAL TYPE	FREQUENCY RANGE
6733-0431-6416	.375	.015	STAINLESS STEEL	DC - 26.5 GHz..

Specifications are subject to change without notice

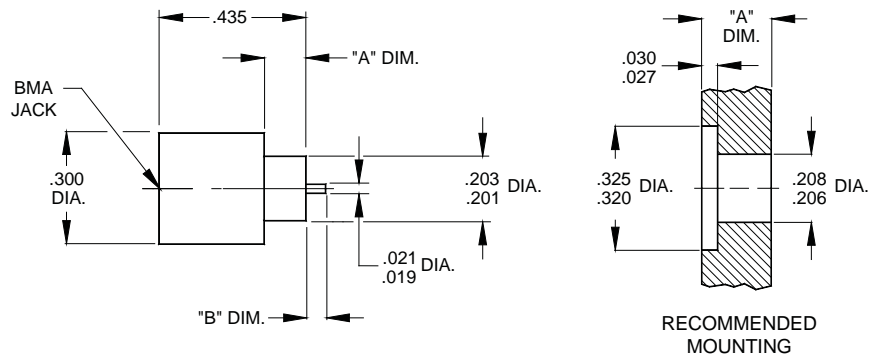
bma • hermetic connectors

male, plug, solder-in



PART NUMBER	"A" DIM.	"B" DIM.	MATERIAL TYPE	FREQUENCY RANGE
2840-0431-6420	.155/.151	.050	STAINLESS STEEL	DC - 26.5 GHz.
2840-0431-6421	.186/.182	.100	STAINLESS STEEL	DC - 26.5 GHz.

female, jack, solder-in

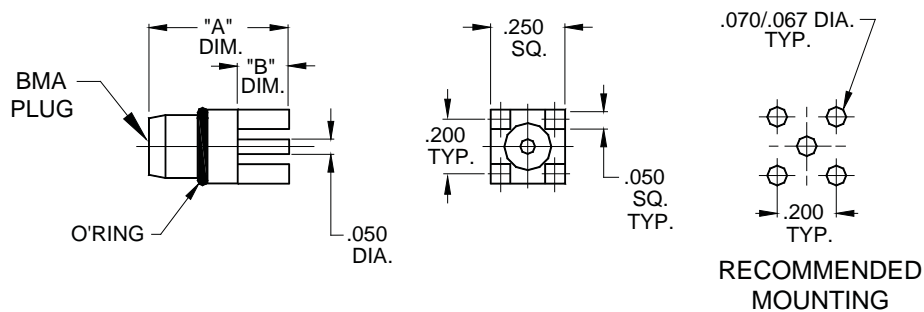


PART NUMBER	"A" DIM.	"B" DIM.	MATERIAL TYPE	FREQUENCY RANGE
6740-0431-6420	.155/.151	.050	STAINLESS STEEL	DC - 26.5 GHz.
6740-0431-6421	.186/.182	.100	STAINLESS STEEL	DC - 26.5 GHz.

Specifications are subject to change without notice

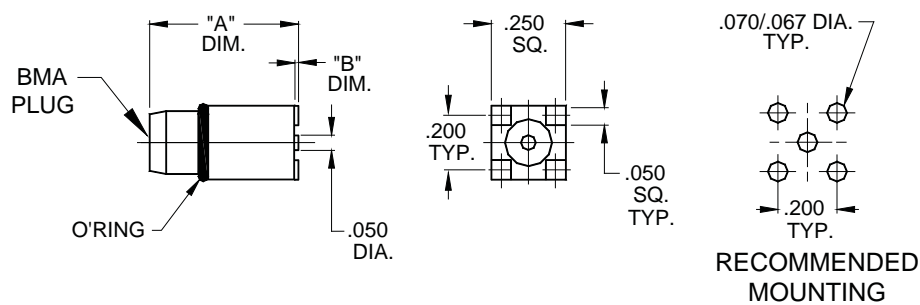
bma • printed circuit board mount

male, plug, straight, 4 post, thru hole mount



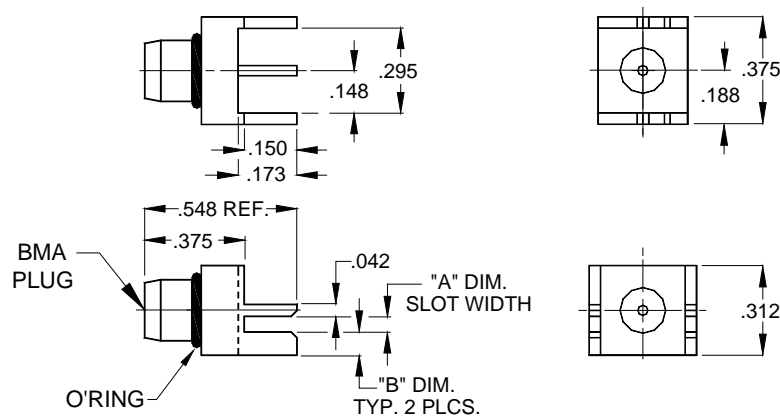
PART NUMBER	"A" DIM.	"B" DIM.	MATERIAL TYPE	FREQUENCY RANGE
2820-0031-2135	.530	.155	BRASS	DC - 6.0 GHz.
2820-0031-6435	.530	.155	STAINLESS STEEL	DC - 6.0 GHz.

male, plug, straight, surface mount



PART NUMBER	"A" DIM.	"B" DIM.	MATERIAL TYPE	FREQUENCY RANGE
2820-0031-2140	.720	.020	BRASS	DC - 12.0 GHz.
2820-0031-6440	.720	.020	STAINLESS STEEL	DC - 12.0 GHz.

male, plug, straight, edge mount

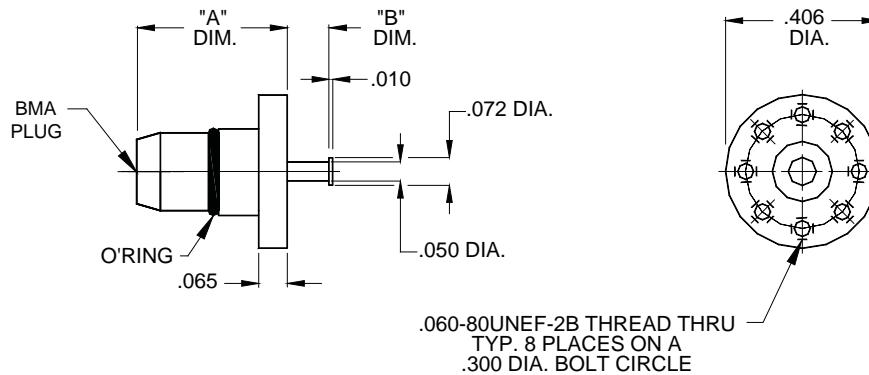


PART NUMBER	"A" DIM.	"B" DIM.	MATERIAL TYPE	FREQUENCY RANGE
2820-0031-2724	.068	.067	BRASS	DC - 4.0 GHz.
2820-0031-6424	.068	.067	STAINLESS STEEL	DC - 4.0 GHz.

Specifications are subject to change without notice

bma • printed circuit board mount

male, plug, surface mount, non-captured contact



PART NUMBER	"A" DIM.	"B" DIM.	MATERIAL TYPE	FREQUENCY RANGE
2880-0031-2720	.322	.062	BRASS	DC - 26.5 GHz.
2880-0031-6220	.322	.062	STAINLESS STEEL	DC - 26.5 GHz.
2880-0031-2722	.322	.125	BRASS	DC - 26.5 GHz.
2880-0031-6222	.322	.125	STAINLESS STEEL	DC - 26.5 GHz.
2880-0031-2731	.390	.031	BRASS	DC - 26.5 GHz.
2880-0031-6231	.390	.031	STAINLESS STEEL	DC - 26.5 GHz.
2880-0031-2763	.390	.062	BRASS	DC - 26.5 GHz.
2880-0031-6263	.390	.062	STAINLESS STEEL	DC - 26.5 GHz.
2880-0031-2725	.390	.125	BRASS	DC - 26.5 GHz.
2880-0031-6225	.390	.125	STAINLESS STEEL	DC - 26.5 GHz.
2880-0031-2756	.390	.156	BRASS	DC - 26.5 GHz.
2880-0031-6256	.390	.156	STAINLESS STEEL	DC - 26.5 GHz.
2880-0031-6224	.391	.236	STAINLESS STEEL	DC - 26.5 GHz.

Specifications are subject to change without notice