



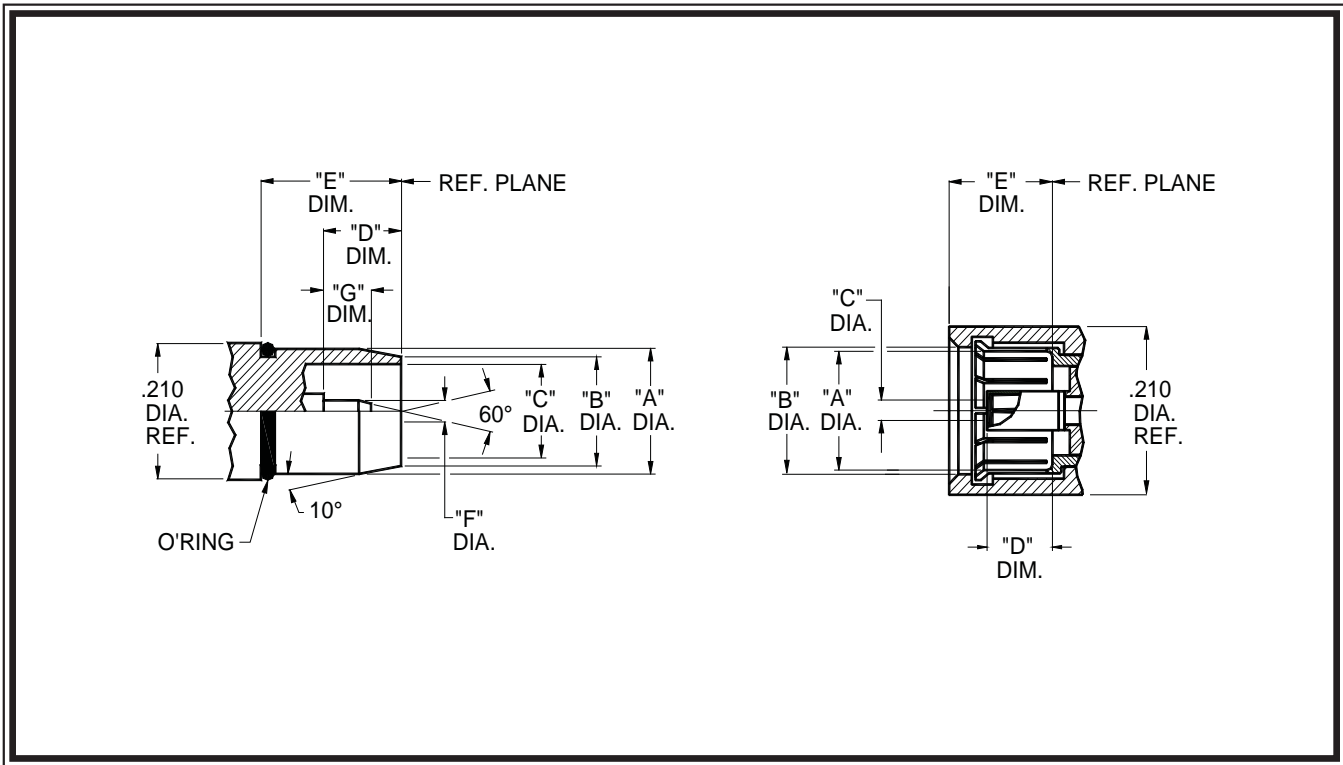
bmam



www.dynawave.com

dynawave
INCORPORATED

bmam • interface dimensions



male, plug

female, jack

LTR.	INCHES / MILLIMETERS ³			
	MINIMUM		MAXIMUM	
	IN.	MM.	IN.	MM.
A	.139	3.53	.141	3.58
B	-----	-----	.120	3.05
C	-----	-----	.110	4.15
D	.128	3.25	.300	2.79
E	.199	5.05	-----	-----
F	.198	5.03	-----	-----
G	.019	0.48	.021	0.53
H	-----	-----	.100	2.54
J	-----	-----	-----	-----
K	-----	-----	-----	-----
---	-----	-----	-----	-----

LTR.	INCHES / MILLIMETERS ³			
	MINIMUM		MAXIMUM	
	IN.	MM.	IN.	MM.
A	-----	-----	.132	3.35
B	.154	3.91	-----	-----
C	SEE NOTE 1		SEE NOTE 1	
D	-----	-----	.127	3.23
E	-----	-----	.197	5.00
F	-----	-----	-----	-----
G	-----	-----	-----	-----
H	-----	-----	-----	-----
J	-----	-----	-----	-----
K	-----	-----	-----	-----
---	-----	-----	-----	-----

Notes:

1. I.D. to meet VSWR and contact resistance when mated with .021 / .019 Dia. inches (0.53 / 0.48) Dia. millimeter pin.
2. When fully engaged, the two reference planes must coincide with metal-to-metal contact.
3. Metric equivalents (to the nearest 0.01mm) are given to general information only and are based on 1.0 millimeter=.03937 inches.
4. These dimensions are subject to change according to the latest revisions of MIL-C-39012 and MIL-STD-348A.

bmam specifications

The specifications below are general specifications for all BMAM connectors. Specific specifications for VSWR, insertion loss and R.F. leakage for each connector is available from Dynawave upon request. Specifications in the following table are recommended for any procurement documents or drawings

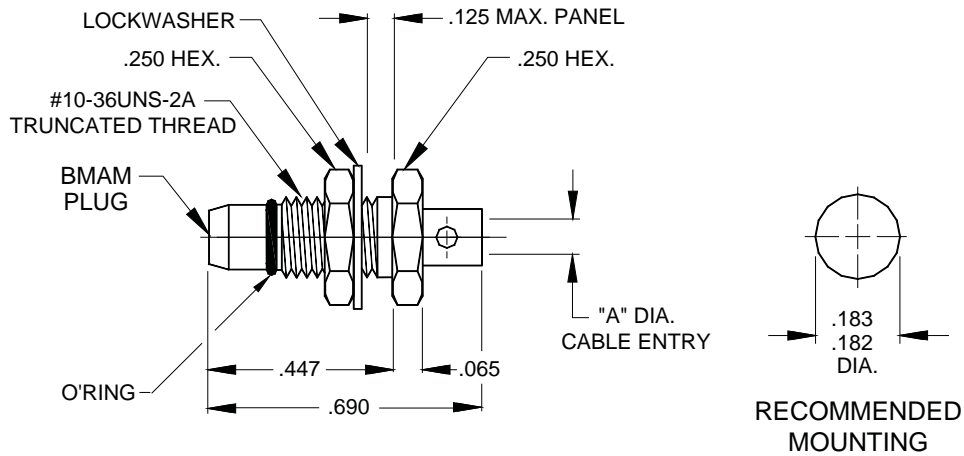
In the event of any conflict between these specifications and General Specification MIL-C-39012 these specifications shall govern. These specifications are subject to change according to the latest revision of MIL-C-39012.

REQUIREMENT	MIL-C-39012 PARAGRAPH	SPECIFICATIONS
GENERAL		
Material	3.3	Steel corrosion resistant per ASTM- A- 581 , Type 303, Cond. A Beryllium copper per ASTM-B196/B, 196M, Copper Alloy TFE Fluorocarbon per ASTM-D-1710, Type 1, Class 1, grade B. Nitrile, (Buna-N) per MIL-P-25732
Finish	3.3.1	Center contacts shall be gold plated to a minimum thickness of .00005-inch in accordance with ATSM-B-488, Type I, Code C. All other metal parts shall be finished so as to provide a connector which meets the corrosion requirements of this table.
Design	3.4	The design shall be such that the outline dimensions in this catalog are met. In addition the assembled connector shall meet the interface dimensions.
ELECTRICAL		
Insulation Resistance	3.11	The insulation resistance shall not be less than 5,000 megohms
Dielectric Withstanding Voltage	3.17	The magnitude of the test voltage shall be 675 volts rms at sea level
RF High Potential Withstanding Voltage	3.23	The RF high potential withstanding voltage is 500 volts rms at 5 MHz. Leakage is not applicable.
Contact Resistance	3.18	The center contact resistance drop shall not exceed 3.0 milliohms and the outer contact resistance drop shall not exceed 1.5 milliohms.
Voltage Standing Wave Ratio (VSWR)	3.14	See applicable connector specifications.
RF Leakage	3.26	See applicable connector specifications.
Insertion Loss	3.27	See applicable connector specification.
MECHANICAL		
Force to Engage and Disengage	3.5.1	The Engagement Force is 3.0 Lbs. maximum. The Disengagement Force is 1.5 Lbs. maximum.
Coupling Nut Retention Force and Proof Torque.		Not applicable .
Cable Retention force	3.24	The force applied shall be 60 pounds minimum. The cable twisting and bending requirements shall not apply.
Mating Characteristics	3.7	See interface dimensions shown on Page 144. Applicable to Females only: over size pin .0202 minimum diameter .045 deep; Insertion force 3 pounds maximum with .0205 minimum diameter pin; withdrawal force 1 ounce minimum with .0190 maximum diameter pin.
Connector Durability	3.15	The connector to be tested and its mating connector shall be subjected to 500 insertions and withdrawal cycles at 12 cycles per minute maximum. The connector shall show no evidence of mechanical failure and connector shall meet the mating characteristic requirements.
ENVIRONMENTAL		
Vibration	3.18	Specification MIL-STD-202, Method 204, Test Condition D.
Shock	3.19	Specification MIL-STD-202, Method 213, Test Condition I.
Thermal Shock	3.20	Specification MIL-STD-202, Method 107, Test Condition B except high temperature shall be + 200°C.
Recommended Mating Torque		Not applicable.
Corrosion (Salt Spray)	3.13	Specification MIL-STD-202, Method 101, Test Condition B. The salt solution shall be five per cent.
Moisture Resistance	3.21	Specification MIL-STD-202, Method 106. Step 7b (vibration) shall be omitted. Insulation resistance shall be 200 megohms minimum within 5 minutes of removal from humidity.
Corona Level	3.22	The connector shall not exhibit breakdown (corona) when the applied voltage is 250 volts rms and the altitude is 70,000 feet.
Complete specifications on every connector in this catalog are available from Dynawave		

Specifications are subject to change without notice

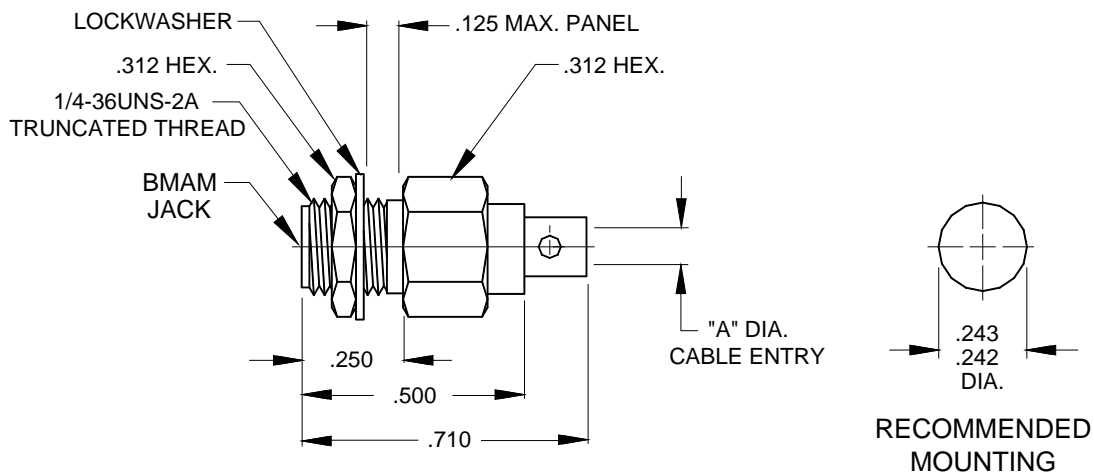
bmam • semi rigid cable connectors

male, plug, bulkhead mount



PART NUMBER	"A" DIA.	CABLE TYPE	MATERIAL TYPE	FREQUENCY RANGE
2610-4721-6450	.052 MIN.	.047 SEMI-RIGID	STAINLESS STEEL	DC - 26.5 GHz.
2610-8521-6450	.089 MIN.	RG 405/U (.085)	STAINLESS STEEL	DC - 26.5 GHz.

female, jack, bulkhead mount

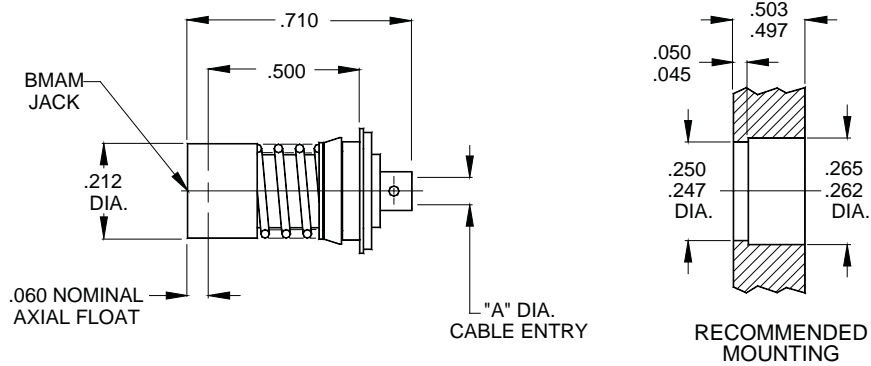


PART NUMBER	"A" DIA.	CABLE TYPE	MATERIAL TYPE	FREQUENCY RANGE
6510-4721-6450	.052 MIN.	.047 SEMI-RIGID	STAINLESS STEEL	DC - 26.5 GHz.
6510-8521-6450	.089 MIN.	RG 405/U (.085)	STAINLESS STEEL	DC - 26.5 GHz.

Specifications are subject to change without notice

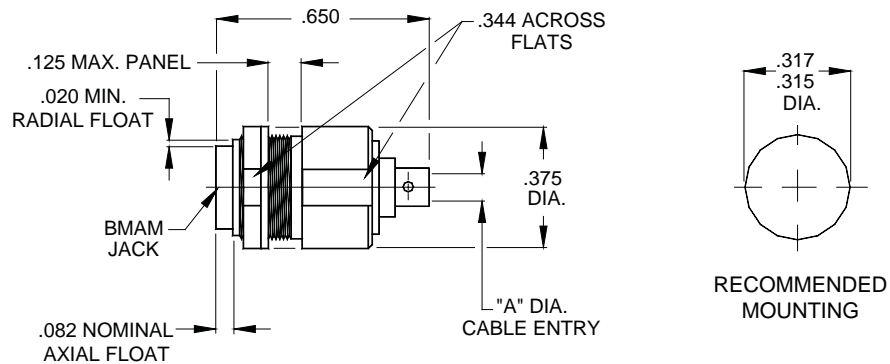
bmam • semi rigid cable connectors

female, jack, bulkhead, straight, float mount



PART NUMBER	"A" DIA.	CABLE TYPE	MATERIAL TYPE	FREQUENCY RANGE
6560-4721-6441	.052 MIN.	.047 SEMI-RIGID	STAINLESS STEEL	DC - 38.0 GHz.
6560-8521-6441	.089 MIN.	RG 405/U (.085)	STAINLESS STEEL	DC - 38.0 GHz.

female, jack, bulkhead, straight, float mount

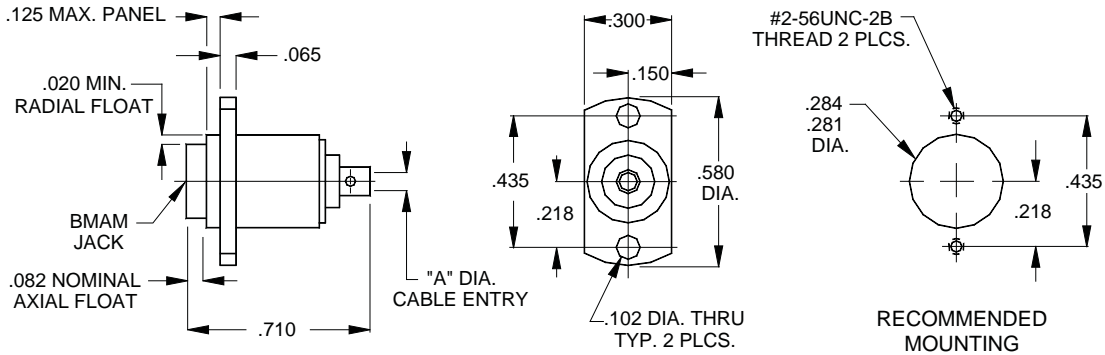


PART NUMBER	"A" DIA.	CABLE TYPE	MATERIAL TYPE	FREQUENCY RANGE
6560-4721-6221	.052 MIN.	.047 SEMI-RIGID	STAINLESS STEEL	DC - 38.0 GHz.
6560-8521-6221	.089 MIN.	RG 405/U (.085)	STAINLESS STEEL	DC - 38.0 GHz.

Specifications are subject to change without notice

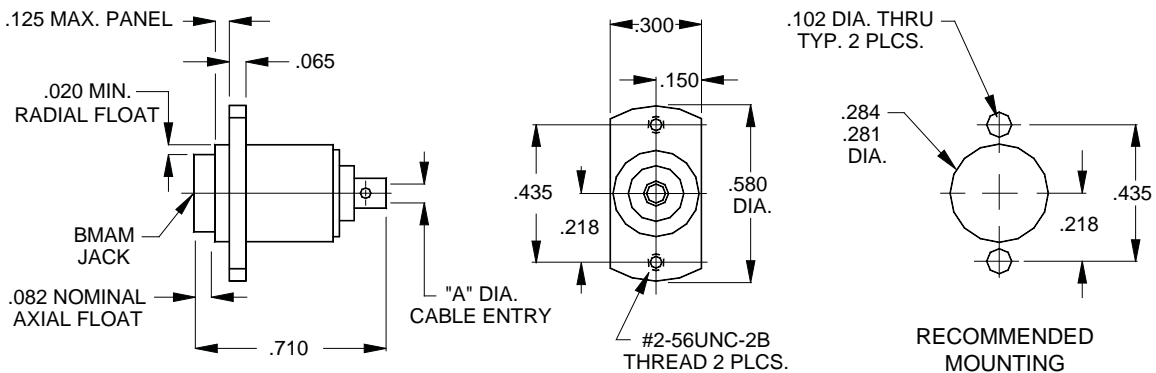
bmam • semi rigid cable connectors

female, jack, 2 hole flange, float mount, threaded panel



PART NUMBER	"A" DIA.	CABLE TYPE	MATERIAL TYPE	FREQUENCY RANGE
6562-4721-6266	.052 MIN.	.047 SEMI-RIGID	STAINLESS STEEL	DC - 38.0 GHz.
6562-8521-6266	.089 MIN.	RG 405/U (.085)	STAINLESS STEEL	DC - 38.0 GHz.

female, jack, 2 hole flange, float mount, threaded flange

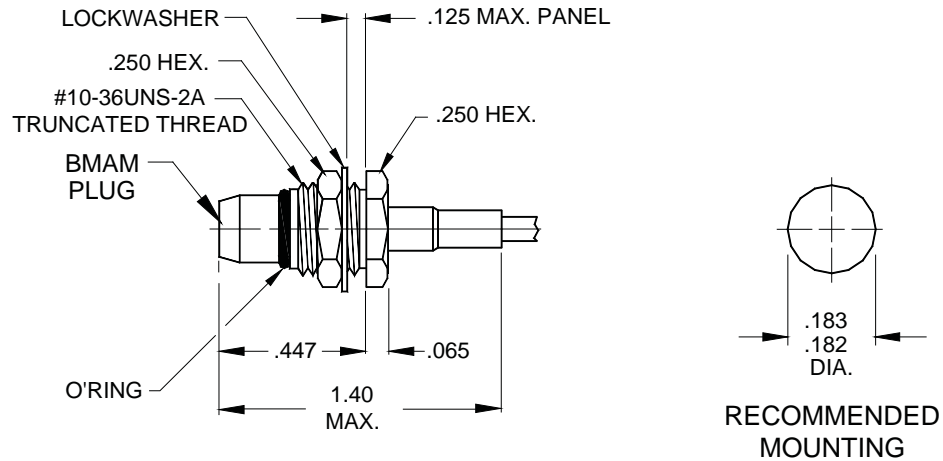


PART NUMBER	"A" DIA.	CABLE TYPE	MATERIAL TYPE	FREQUENCY RANGE
6562-4721-6267	.052 MIN.	.047 SEMI-RIGID	STAINLESS STEEL	DC - 38.0 GHz.
6562-8521-6267	.089 MIN.	RG 405/U (.085)	STAINLESS STEEL	DC - 38.0 GHz.

Specifications are subject to change without notice

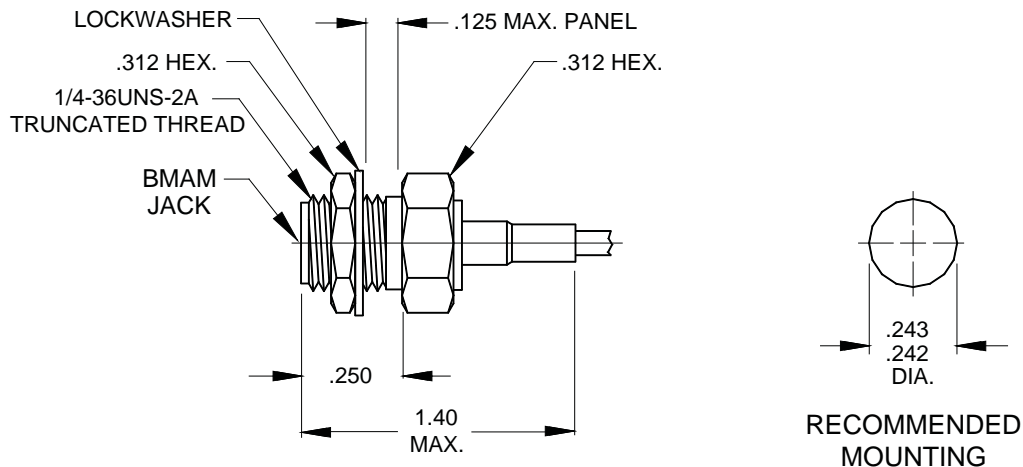
bmam • flexible cable connectors

male, plug, bulkhead mount, crimp attachment



PART NUMBER	CABLE TYPE	MATERIAL TYPE	FREQUENCY RANGE
2610-1630-6200	RG 174/U, 179, 187, 188, 316	STAINLESS STEEL	DC - 3.0 GHz.
2610-1830-6200	RG 316 DOUBLE BRAID	STAINLESS STEEL	DC - 12.4 GHz.
2610-4230-6200	RG 58/U, 142, 223, 400	STAINLESS STEEL	DC - 12.4 GHz.

female, jack, bulkhead mount, crimp attachment

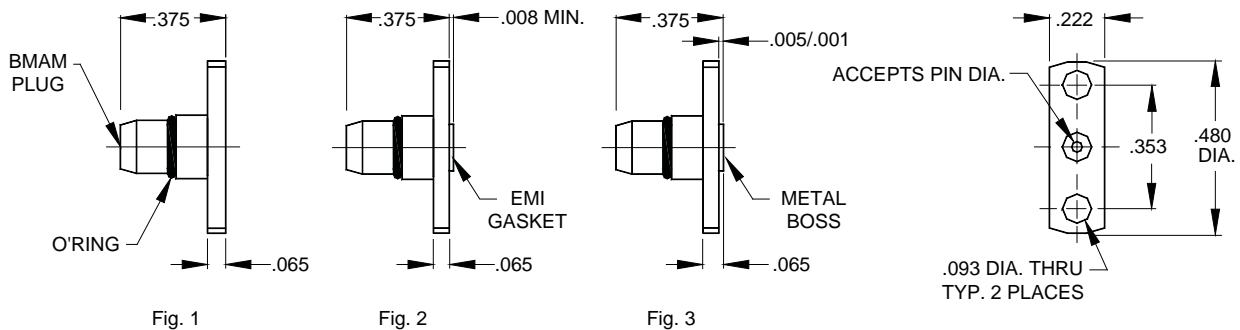


PART NUMBER	CABLE TYPE	MATERIAL TYPE	FREQUENCY RANGE
6510-1630-6200	RG 174/U, 179, 187, 188, 316	STAINLESS STEEL	DC - 3.0 GHz.
6510-1830-6200	RG 316 DOUBLE BRAID	STAINLESS STEEL	DC - 12.4 GHz.
6510-4230-6200	RG 58/U, 142, 223, 400	STAINLESS STEEL	DC - 12.4 GHz.

Specifications are subject to change without notice

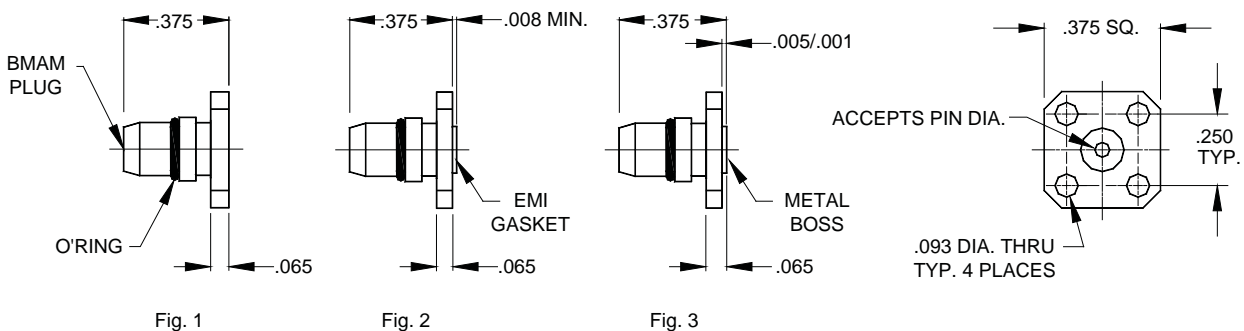
bmam • field replaceable connectors

male, plug, 2 hole flange mount



PART NUMBER	Fig.	ACCEPTS PIN DIA	MATERIAL TYPE	FREQUENCY RANGE
2652-0081-6213	1	.016/.011	STAINLESS STEEL	DC - 38.0 GHz.
2652-0781-6213	2	.016/.011	STAINLESS STEEL	DC - 38.0 GHz.
2652-0881-6212	3	.016/.011	STAINLESS STEEL	DC - 38.0 GHz.
2652-0081-6223	1	.021/.017	STAINLESS STEEL	DC - 38.0 GHz.
2652-0781-6223	2	.021/.017	STAINLESS STEEL	DC - 38.0 GHz.
2652-0881-6222	3	.021/.017	STAINLESS STEEL	DC - 38.0 GHz.

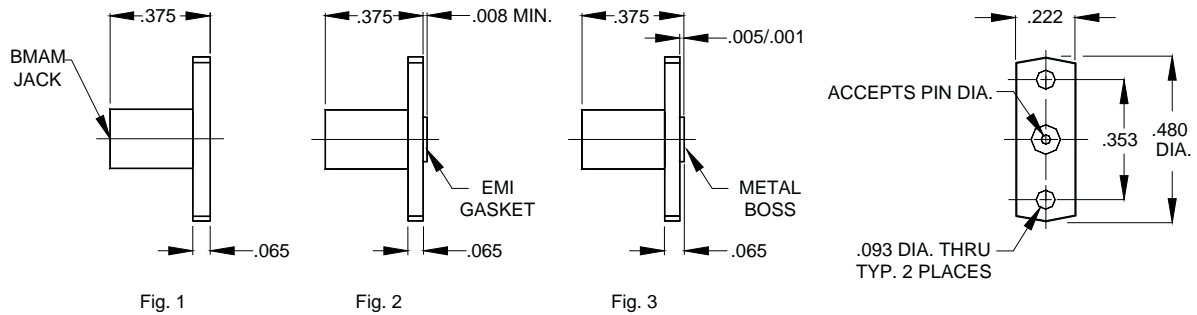
male, plug, 4 hole flange mount



PART NUMBER	Fig.	ACCEPTS PIN DIA	MATERIAL TYPE	FREQUENCY RANGE
2654-0081-6217	1	.016/.011	STAINLESS STEEL	DC - 38.0 GHz.
2654-0781-6217	2	.016/.011	STAINLESS STEEL	DC - 38.0 GHz.
2654-0881-6217	3	.016/.011	STAINLESS STEEL	DC - 38.0 GHz.
2654-0081-6227	1	.021/.017	STAINLESS STEEL	DC - 38.0 GHz.
2654-0781-6227	2	.021/.017	STAINLESS STEEL	DC - 38.0 GHz.
2654-0881-6227	3	.021/.017	STAINLESS STEEL	DC - 38.0 GHz.

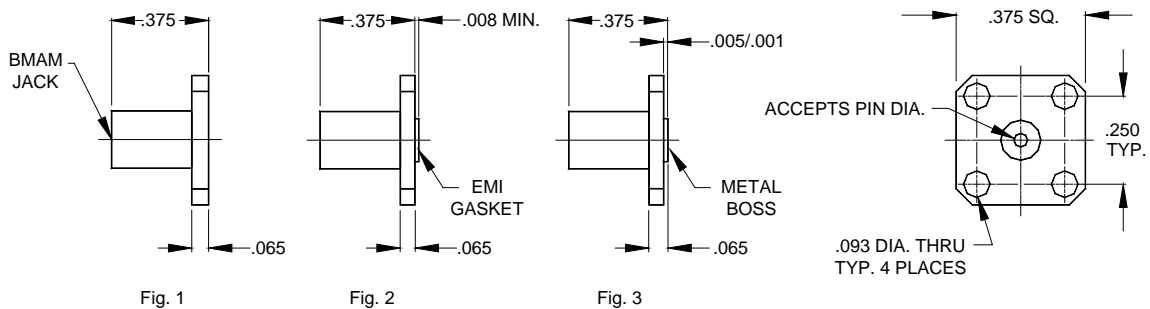
Specifications are subject to change without notice

female, jack, 2 hole flange mount



PART NUMBER	Fig.	ACCEPTS PIN DIA	MATERIAL TYPE	FREQUENCY RANGE
6552-0081-6215	1	.016/.011	STAINLESS STEEL	DC - 38.0 GHz.
6552-0781-6215	2	.016/.011	STAINLESS STEEL	DC - 38.0 GHz.
6552-0881-6215	3	.016/.011	STAINLESS STEEL	DC - 38.0 GHz.
6552-0081-6220	1	.021/.017	STAINLESS STEEL	DC - 38.0 GHz.
6552-0781-6220	2	.021/.017	STAINLESS STEEL	DC - 38.0 GHz.
6552-0881-6220	3	.021/.017	STAINLESS STEEL	DC - 38.0 GHz.

female, jack, 4 hole flange mount

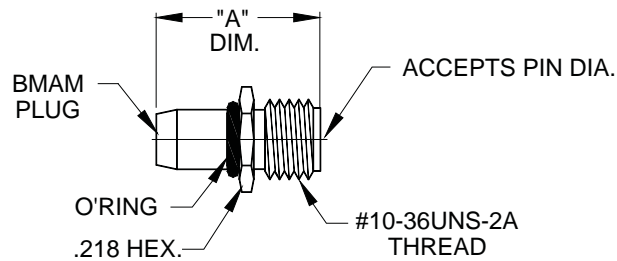


PART NUMBER	Fig.	ACCEPTS PIN DIA	MATERIAL TYPE	FREQUENCY RANGE
6554-0081-6217	1	.016/.011	STAINLESS STEEL	DC - 38.0 GHz.
6554-0781-6217	2	.016/.011	STAINLESS STEEL	DC - 38.0 GHz.
6554-0881-6217	3	.016/.011	STAINLESS STEEL	DC - 38.0 GHz.
6554-0081-6227	1	.021/.017	STAINLESS STEEL	DC - 38.0 GHz.
6554-0781-6227	2	.021/.017	STAINLESS STEEL	DC - 38.0 GHz.
6554-0881-6227	3	.021/.017	STAINLESS STEEL	DC - 38.0 GHz.

Specifications are subject to change without notice

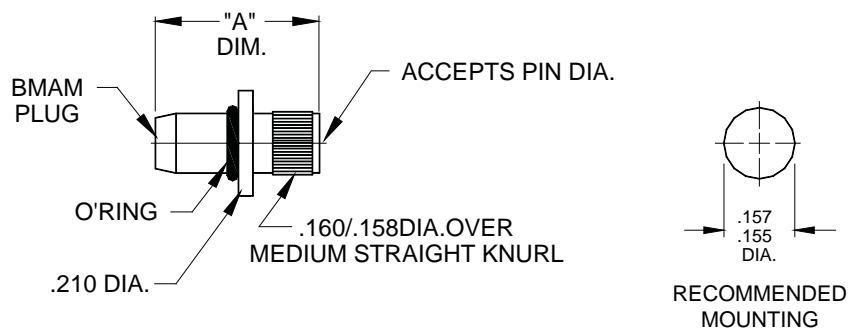
bmam • field replaceable connectors

male, plug, thread-in



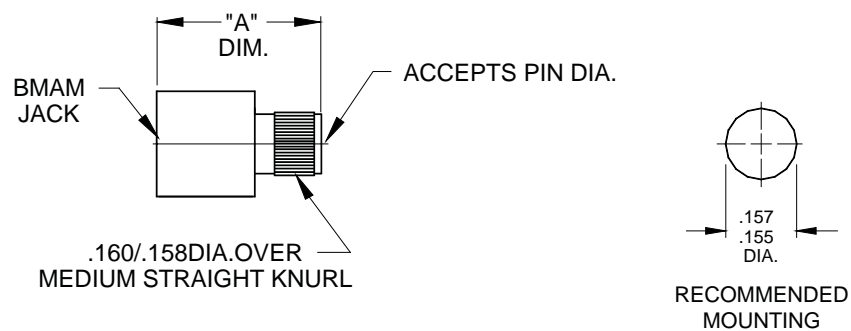
PART NUMBER	ACCEPTS PIN DIA.	"A" DIM.	MATERIAL TYPE	FREQUENCY RANGE
2630-0081-6211	.016/.011	.379	STAINLESS STEEL	DC - 38.0 GHz.
2630-0081-6214	.021/.017	.379	STAINLESS STEEL	DC - 38.0 GHz.

male, plug, press-in



PART NUMBER	ACCEPTS PIN DIA.	"A" DIM.	MATERIAL TYPE	FREQUENCY RANGE
2640-0081-6215	.016/.011	.450	STAINLESS STEEL	DC - 38.0 GHz.
2640-0081-6244	.021/.017	.450	STAINLESS STEEL	DC - 38.0 GHz.

female, jack, press-in

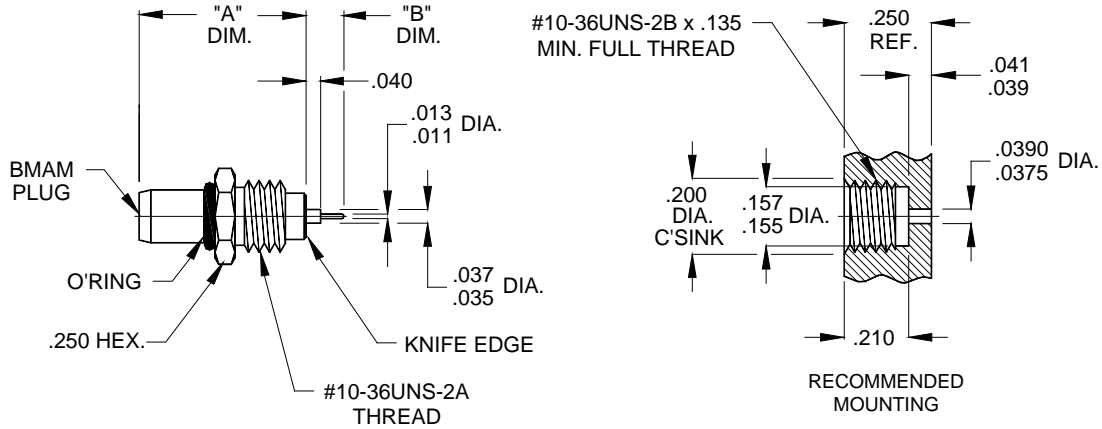


PART NUMBER	ACCEPTS PIN DIA.	"A" DIM.	MATERIAL TYPE	FREQUENCY RANGE
6540-0081-6215	.016/.011	.450	STAINLESS STEEL	DC - 38.0 GHz.
6540-0081-6220	.021/.017	.450	STAINLESS STEEL	DC - 38.0 GHz.

Specifications are subject to change without notice

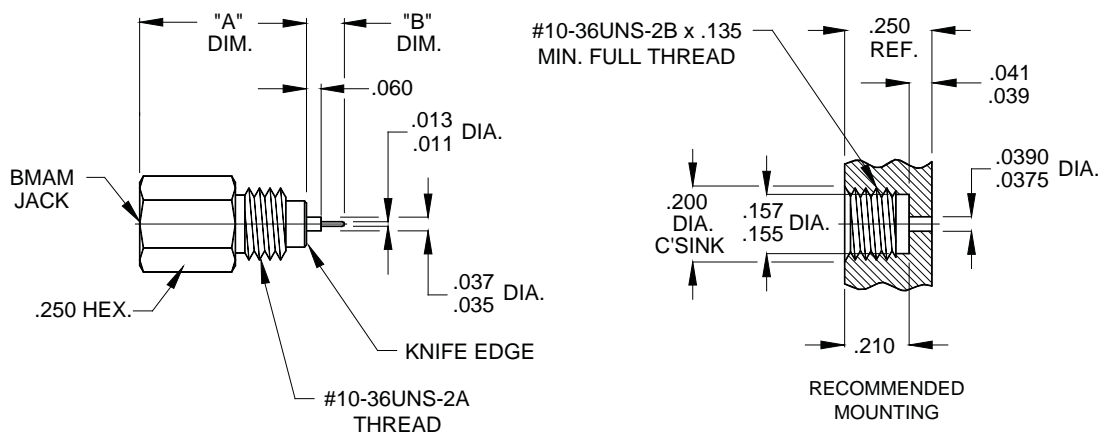
bmam • hermetic connectors

male, plug, thread-in “sparkplug”



PART NUMBER	"A" DIM.	"B" DIM.	MATERIAL TYPE	FREQUENCY RANGE
2630-0431-6400	.475	.080	STAINLESS STEEL	DC - 38.0 GHz.
2630-0431-6401	.440	.100	STAINLESS STEEL	DC - 38.0 GHz.

female, jack, thread-in “sparkplug”

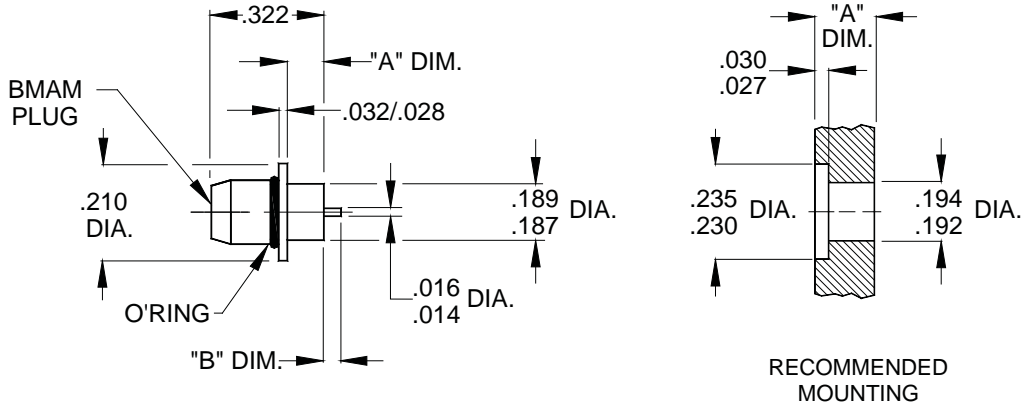


PART NUMBER	"A" DIM.	"B" DIM.	MATERIAL TYPE	FREQUENCY RANGE
6530-0431-6460	.455	.100	STAINLESS STEEL	DC - 38.0 GHz..

Specifications are subject to change without notice

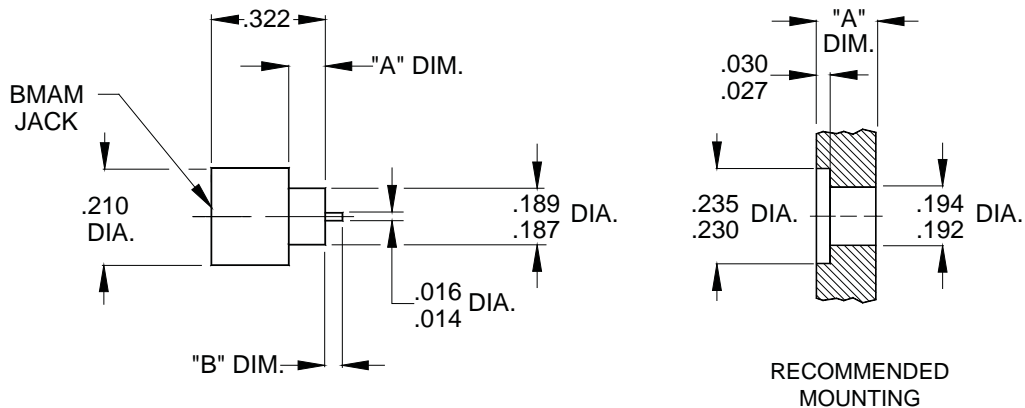
bmam • hermetic connectors

male, plug, solder-in



PART NUMBER	"A" DIM.	"B" DIM.	MATERIAL TYPE	FREQUENCY RANGE
2640-0431-6420	.072/.068	.040	STAINLESS STEEL	DC - 26.5 GHz.
2640-0431-6421	.072/.068	.200	STAINLESS STEEL	DC - 26.5 GHz.

female, jack, solder-in



PART NUMBER	"A" DIM.	"B" DIM.	MATERIAL TYPE	FREQUENCY RANGE
6540-0431-6420	.072/.068	.040	STAINLESS STEEL	DC - 26.5 GHz.
6540-0431-6421	.072/.068	.200	STAINLESS STEEL	DC - 26.5 GHz.

Specifications are subject to change without notice