



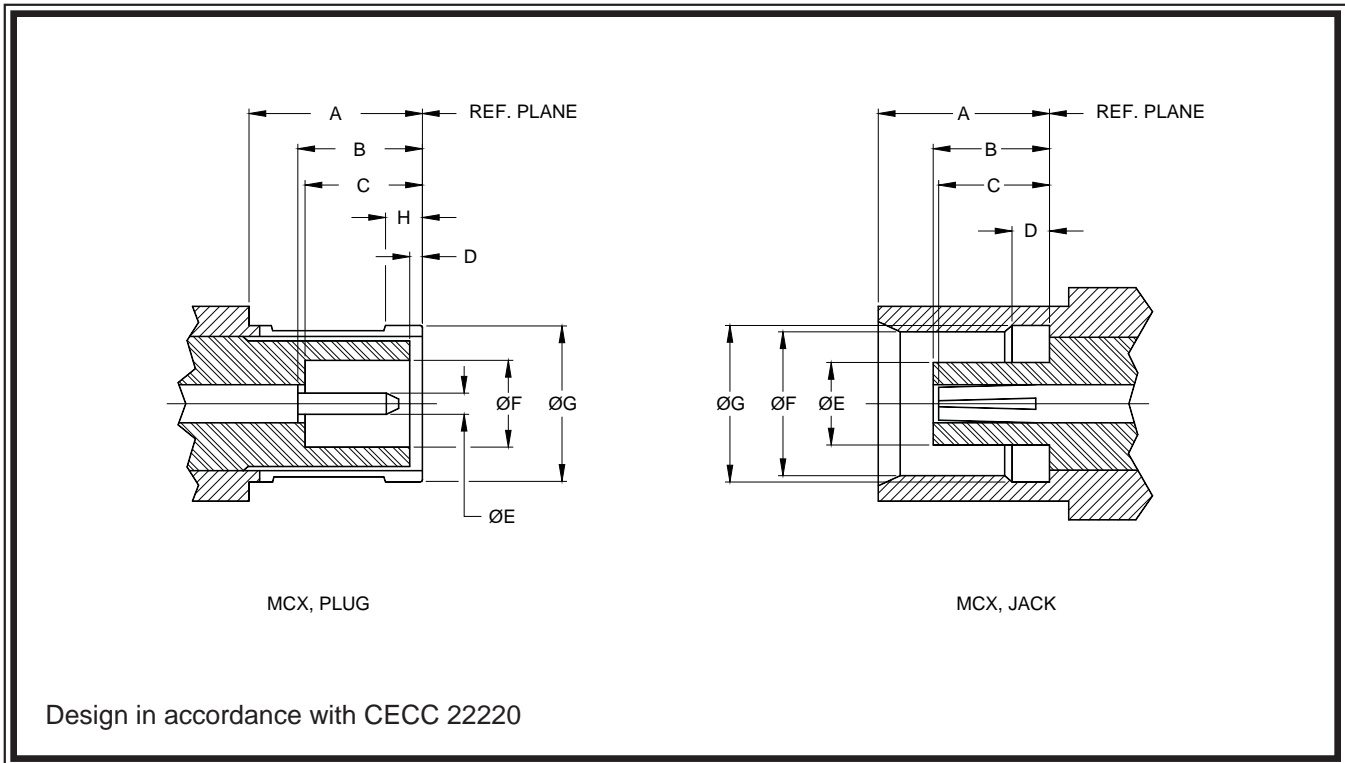
mcx



www.dynawave.com

dynawave
INCORPORATED

mcx • interface dimensions



male, plug

female, jack

LTR.	INCHES / MILLIMETERS ³			
	MINIMUM		MAXIMUM	
	IN.	MM.	IN.	MM.
A	.164	4.17	-----	-----
B	.110	2.80	.126	3.20
C	.110	2.80	.126	3.20
D	.000	0.00	.012	0.30
E	.019	0.48	.021	0.53
F	.079	2.00	.081	2.07
G	.146	3.72	.150	3.80
H	.028	0.71	.030	0.76
J	-----	-----	-----	-----
K	-----	-----	-----	-----
L	-----	-----	-----	-----

LTR.	INCHES / MILLIMETERS ³			
	MINIMUM		MAXIMUM	
	IN.	MM.	IN.	MM.
A	.158	4.01	.162	4.12
B	.103	2.62	.110	2.79
C	.091	2.31	.110	2.79
D	.075	1.91	.085	2.16
E	.071	1.80	.078	1.98
F	.135	3.43	.137	3.48
G	.142	3.61	.148	3.76
H	-----	-----	-----	-----
J	-----	-----	-----	-----
K	-----	-----	-----	-----
L	-----	-----	-----	-----

Notes:

1. I.D. to meet VSWR and contact resistance when mated with .054 / .052 Dia. inches (1.37 / 1.32) Dia. millimeter pin.
2. When fully engaged, the two reference planes must coincide with metal-to-metal contact.
3. Metric equivalents (to the nearest 0.01mm) are given to general information only and are based on 1.0 millimeter=.03937 inches.
4. These dimensions are subject to change according to the latest revisions of MIL-C-39012 and MIL-STD-348A.

Specifications are subject to change without notice

mcx specifications

The specifications below are general specifications for all MCX connectors. Specific specifications for VSWR, insertion loss and R.F. leakage for each connector is available from Dynawave upon request. Specifications in the following table are recommended for any procurement documents or drawings

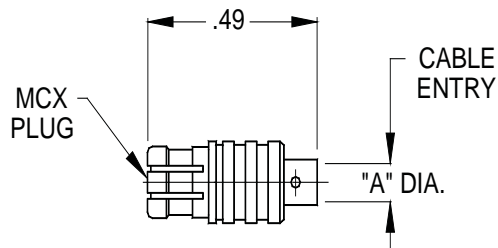
In the event of any conflict between these specifications and General Specification CECC 22220 these specifications shall govern. These specifications are subject to change according to the latest revision of CECC 22220.

REQUIREMENT	SPECIFICATIONS
GENERAL	
Material	Brass per ASTM B16, Temper H02, Alloy C36000. Beryllium copper per ASTM-B196/B, 196M, Copper Alloy TFE Fluorocarbon per ASTM-D-1710, Type 1, Grade 1, Class B. Silicone Rubber per ZZ-R-765, CLASS IIB, 50-60 Shore.
Finish	Center contacts shall be gold plated to a minimum thickness of .00005-inch in accordance with ATSM-B-488, Type I, Code C. All other metal parts shall be finished so as to provide a connector which meets the corrosion requirements of this table.
Design	The design shall be such that the outline dimensions in this catalog are met. In addition the assembled connector shall meet the interface dimensions.
ELECTRICAL	
Insulation Resistance	The insulation resistance shall not be less than 5,000 megohms
Dielectric Withstanding Voltage	The magnitude of the test voltage shall be 1,000 volts rms at sea level
RF High Potential Withstanding Voltage	The RF high potential withstanding voltage is 1,000 volts rms at 5 MHz. Leakage is not applicable.
Contact Resistance	The center contact resistance drop shall not exceed 5.0 milliohms Max. and the outer contact resistance drop shall not exceed 1.0 milliohms.
Voltage Standing Wave Ratio (VSWR)	See applicable connector specifications.
RF Leakage	See applicable connector specifications.
Insertion Loss	See applicable connector specification.
MECHANICAL	
Force to Engage and Disengage	The Engagement force shall not exceed 5.6 pounds. The Disengagement force shall be no greater than 4.5 pounds.
Mating Characteristics	See interface dimensions shown on Page 208. Applicable to Females only: oversize pin .021 minimum diameter .045 deep; Insertion force 3 pounds maximum with .0208 minimum diameter pin; withdrawal force 1 ounce minimum with .0195 maximum diameter pin.
Connector Durability	The connector to be tested and its mating connector shall be subjected to 500 insertions and withdrawal cycles at 12 cycles per minute maximum. The connector shall show no evidence of mechanical failure and connector shall meet the mating characteristic requirements.
ENVIRONMENTAL	
Vibration	Specification MIL-STD-202, Method 204, Test Condition D.
Thermal Shock	Specification MIL-STD-202, Method 107, Test Condition C.
Corrosion (Salt Spray)	Specification MIL-STD-202, Method 101, Test Condition B. The salt solution shall be five per cent.
Moisture Resistance	Specification MIL-STD-202, Method 106. Step 7b (vibration) shall be omitted. Insulation resistance shall be 200 megohms minimum within 5 minutes of removal from humidity.

Complete specifications on every connector in this catalog are available from Dynawave

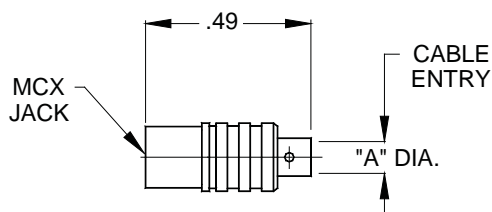
mcx • semi rigid cable connectors

male, plug, straight



PART NUMBER	"A" DIA.	CABLE TYPE	MATERIAL TYPE	FREQUENCY RANGE
1500-4720-2400	.051 MIN.	.047 SEMI-RIGID	BRASS	DC - 6.0 GHz.
1500-8520-2400	.089 MIN.	RG 405/U (.085)	BRASS	DC - 6.0 GHz.
1500-4120-2400	.144 MIN.	RG 402/U (.141)	BRASS	DC - 6.0 GHz.
1500-4720-5400	.051 MIN.	.047 SEMI-RIGID	BERYLLIUM COPPER	DC - 6.0 GHz.
1500-8520-5400	.089 MIN.	RG 405/U (.085)	BERYLLIUM COPPER	DC - 6.0 GHz.
1500-4120-5400	.144 MIN.	RG 402/U (.141)	BERYLLIUM COPPER	DC - 6.0 GHz.

female, jack, straight

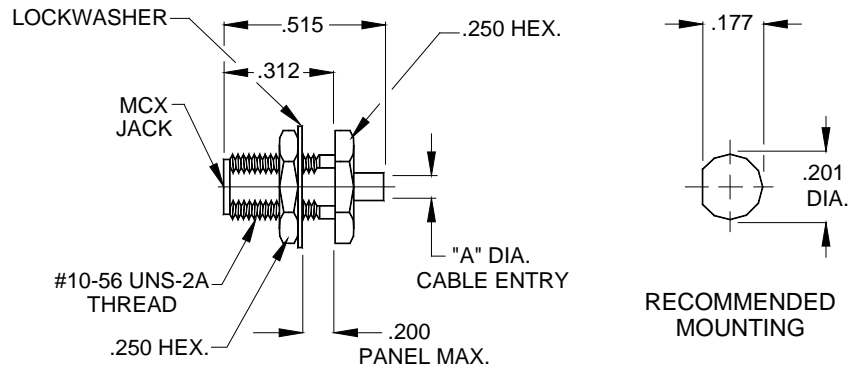


PART NUMBER	"A" DIA.	CABLE TYPE	MATERIAL TYPE	FREQUENCY RANGE
1600-4720-2400	.051 MIN.	.047 SEMI-RIGID	BRASS	DC - 6.0 GHz.
1600-8520-2400	.089 MIN.	RG 405/U (.085)	BRASS	DC - 6.0 GHz.
1600-4120-2400	.144MIN.	RG 402/U (.141)	BRASS	DC - 6.0 GHz.

Specifications are subject to change without notice

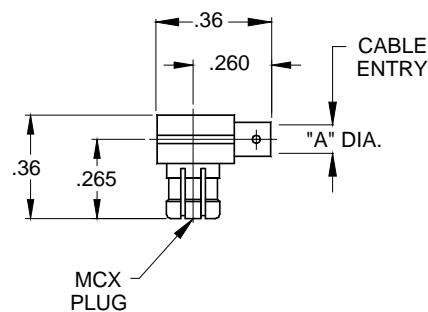
mcx • semi rigid cable connectors

female, jack, bulkhead mount



PART NUMBER	"A" DIA.	CABLE TYPE	MATERIAL TYPE	FREQUENCY RANGE
1610-4720-2400	.051 MIN.	.047 SEMI-RIGID	BRASS	DC - 6.0 GHz.
1610-8520-2400	.089 MIN.	RG 405/U (.085)	BRASS	DC - 6.0 GHz.
1610-4120-2400	.144MIN.	RG 402/U (.141)	BRASS	DC - 6.0 GHz.

male, plug, right angle

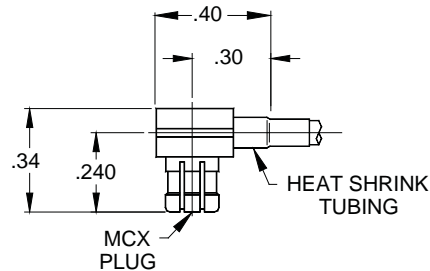


PART NUMBER	"A" DIA.	CABLE TYPE	MATERIAL TYPE	FREQUENCY RANGE
1501-4720-2400	.051 MIN.	.047 SEMI-RIGID	BRASS	DC - 6.0 GHz.
1501-8520-2400	.089 MIN.	RG 405/U (.085)	BRASS	DC - 6.0 GHz.
1501-4120-2400	.144MIN.	RG 402/U (.141)	BRASS	DC - 6.0 GHz.

Specifications are subject to change without notice

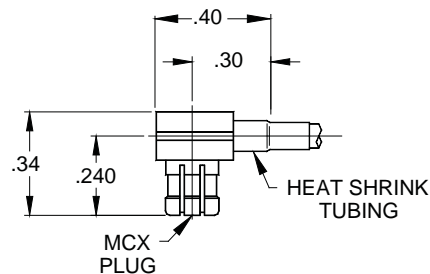
mcx • flexible cable connectors

male, plug, right angle, crimp attachment
rg174/u, 179, 187, 188, 316



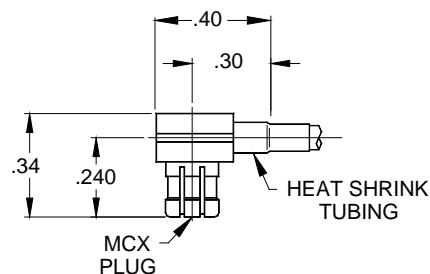
PART NUMBER	MATERIAL TYPE	FREQUENCY RANGE
1501-1630-2400	BRASS	DC - 3.0 GHz.

male, plug, right angle, crimp attachment
rg316 double braid



PART NUMBER	MATERIAL TYPE	FREQUENCY RANGE
1501-1830-2400	BRASS	DC - 3.0 GHz.

male, plug, right angle, crimp attachment
rg55/u, 142, 223, 400

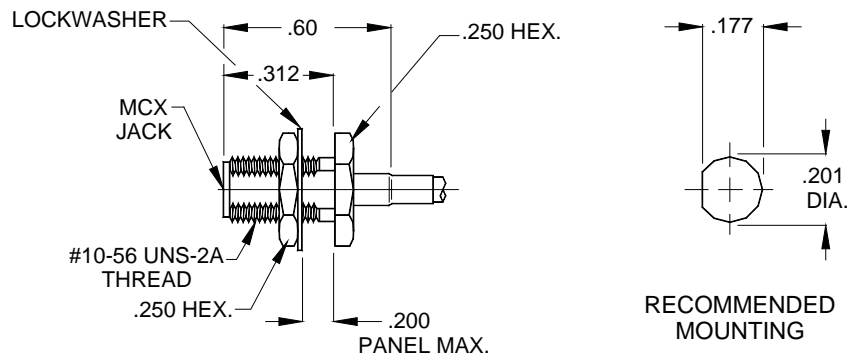


PART NUMBER	MATERIAL TYPE	FREQUENCY RANGE
1501-4230-2400	BRASS	DC - 3.0 GHz.

Specifications are subject to change without notice

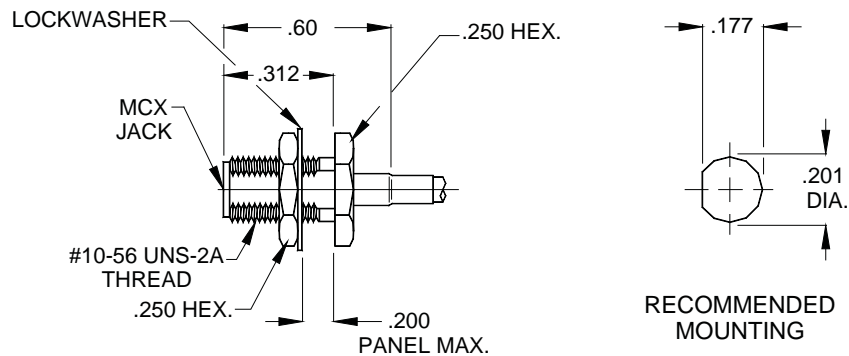
mcx • flexible cable connectors

female, jack, bulkhead mount, crimp attachment
rg174/u, 179, 187, 188, 316



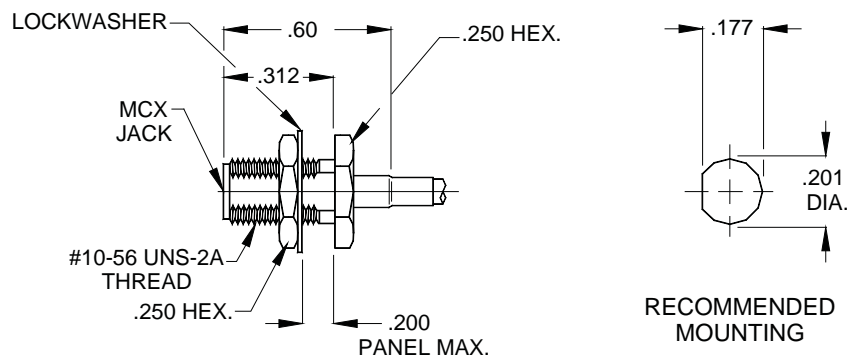
PART NUMBER	MATERIAL TYPE	FREQUENCY RANGE
1610-1630-2400	BRASS	DC - 3.0 GHz.

female, jack, bulkhead mount, crimp attachment
rg316 double braid



PART NUMBER	MATERIAL TYPE	FREQUENCY RANGE
1610-1830-2400	BRASS	DC - 3.0 GHz.

male, plug, bulkhead mount, crimp attachment
rg55/u, 142, 223, 400

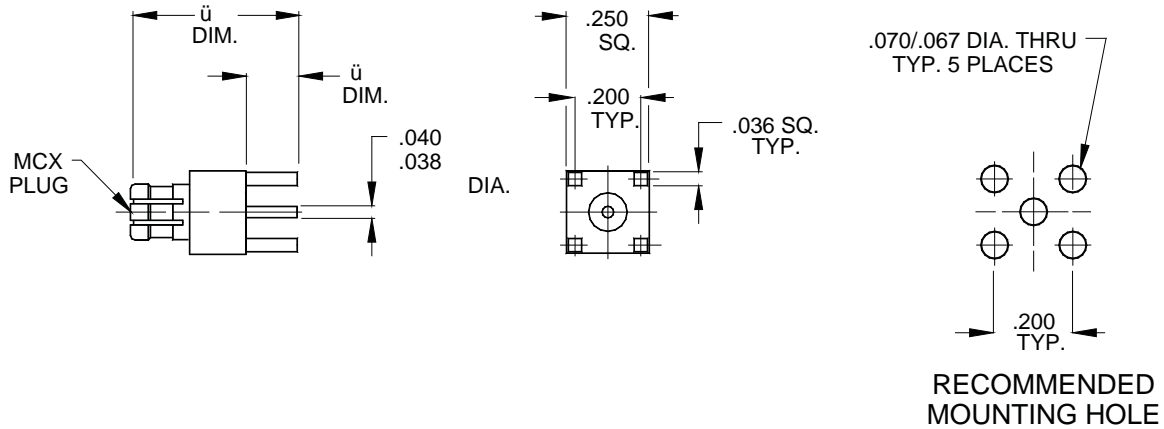


PART NUMBER	MATERIAL TYPE	FREQUENCY RANGE
1610-4230-2400	BRASS	DC - 3.0 GHz.

Specifications are subject to change without notice

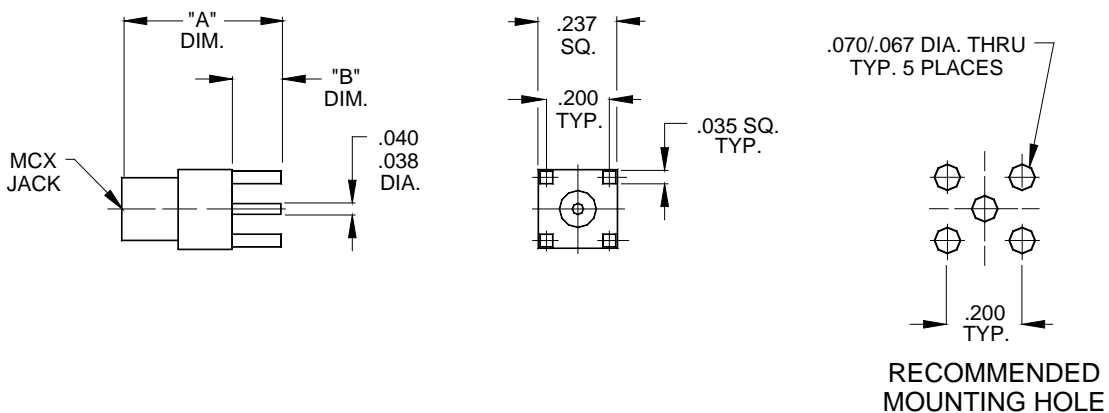
mcx • printed circuit board mount

male, plug, straight, 4 post, thru hole



PART NUMBER	"A" DIM.	"B" DIM.	MATERIAL TYPE	FREQUENCY RANGE
1520-0031-2401	.400	.155	BRASS	DC - 6.0 GHz.
1520-0031-2402	.500	.155	BRASS	DC - 6.0 GHz.

female, jack, straight, 4 post, thru hole

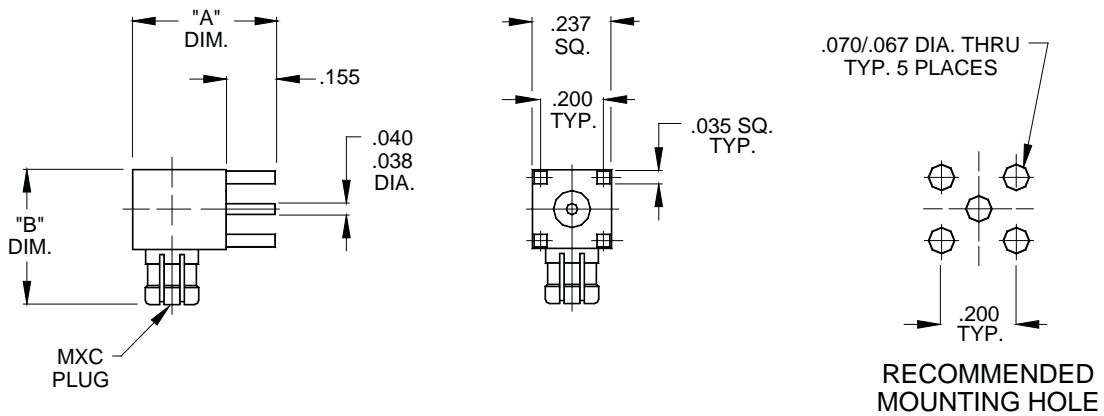


PART NUMBER	"A" DIM.	"B" DIM.	MATERIAL TYPE	FREQUENCY RANGE
1620-0031-2401	.394	.142	BRASS	DC - 6.0 GHz.
1620-0031-2402	.500	.155	BRASS	DC - 6.0 GHz.

Specifications are subject to change without notice

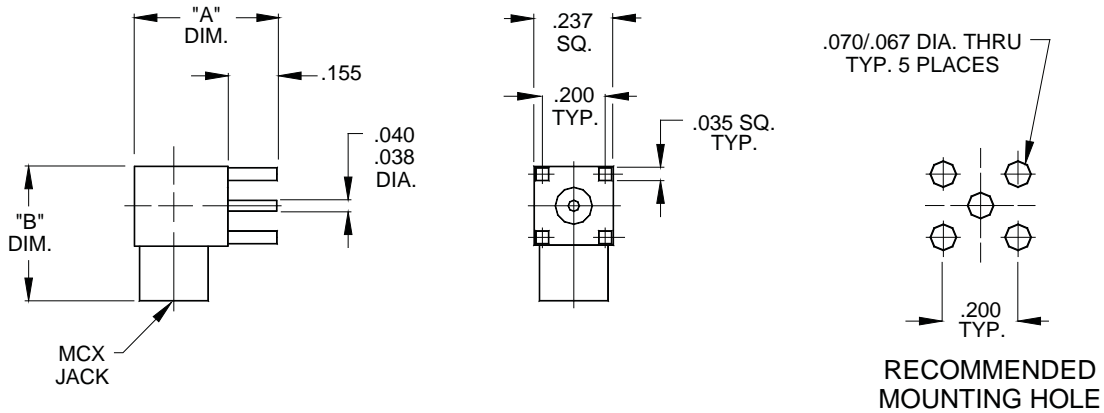
mcx • printed circuit board mount

male, plug, right angle, 4 post, thru hole



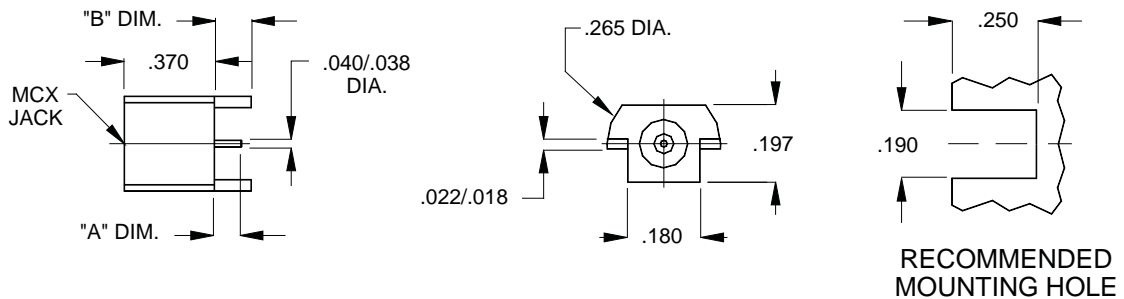
PART NUMBER	"A" DIM.	"B" DIM.	MATERIAL TYPE	FREQUENCY RANGE
1521-0031-2401	.390	.400	BRASS	DC - 6.0 GHz.

female, jack, right angle, 4 post, thru hole



PART NUMBER	"A" DIM.	"B" DIM.	MATERIAL TYPE	FREQUENCY RANGE
1621-0031-2401	.390	.375	BRASS	DC - 6.0 GHz.

female, jack, edge mount

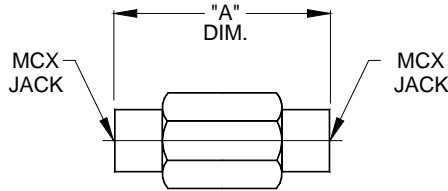


PART NUMBER	"A" DIM.	"B" DIM.	MATERIAL TYPE	FREQUENCY RANGE
1620-0031-2400	.120	.120	BRASS	DC - 6.0 GHz.

Specifications are subject to change without notice

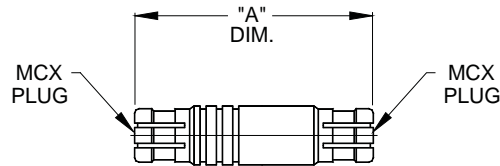
mcx • in-series adapters

female, jack to female, jack, straight



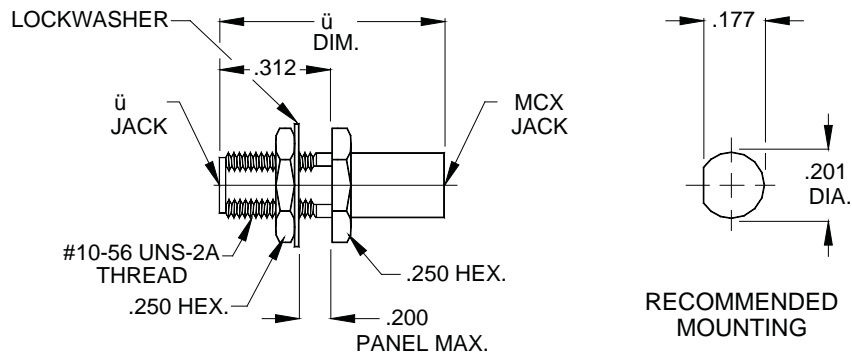
PART NUMBER	"A" DIM.	MATERIAL TYPE	FREQUENCY RANGE
1100-1616-2400	.720	BRASS	DC - 6.0 GHz.

male, plug to male, plug, straight



PART NUMBER	"A" DIM.	MATERIAL TYPE	FREQUENCY RANGE
1100-1515-2400	.866	BRASS	DC - 6.0 GHz.
1100-1515-5400	.866	BERYLLIUM COPPER	DC - 6.0 GHz.

female, jack to female, jack, bulkhead mount



PART NUMBER	"A" DIM.	MATERIAL TYPE	FREQUENCY RANGE
1110-1616-2400	.720	BRASS	DC - 6.0 GHz.

Specifications are subject to change without notice