

RF Power Hi-Load Capacitors

RF Power Capacitors Hi-Load 15kV (with Feed Through Mounting)

Ceramic Power Capacitors can be defined as capacitors suitable for RF use with reactive powers >1kVA, rated currents >1A rms and rated voltage >700V.

UK Office
Morgan Electro Ceramics
Vauxhall Industrial Estate
Ruabon, Wrexham
LL14 6HY
Tel : +44 (0) 1978 810456
Fax : +44 (0) 1978 824303

Applications Include

Radio Broadcast Transmitters
Antenna Units
Induction and dielectric heating
Filter, bypass and coupling circuits in the frequency range 50kHz to 100MHz

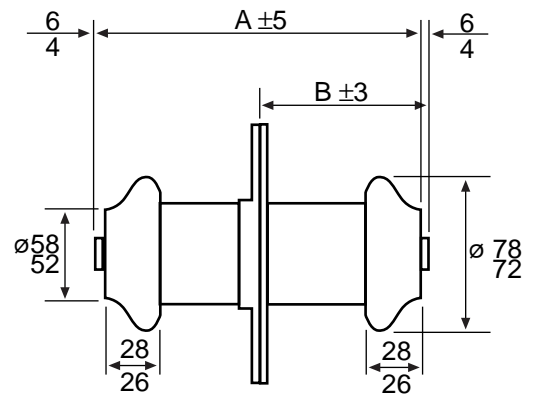
Material Characteristics

Typical Dissipation Factor @ 1MHz for C<1000pF
Typical Dissipation Factor @ 1kHz for C>=1000pF
Volume Resistivity
Temperature Range
Maximum Relative Humidity
Maximum feedthrough current rating (LF)

$\leq 5 \times 10^{-4}$
 $\leq 10 \times 10^{-4}$
 $10^{13} \Omega\text{M}$
-25 to +95 °C
75 %
75Arms

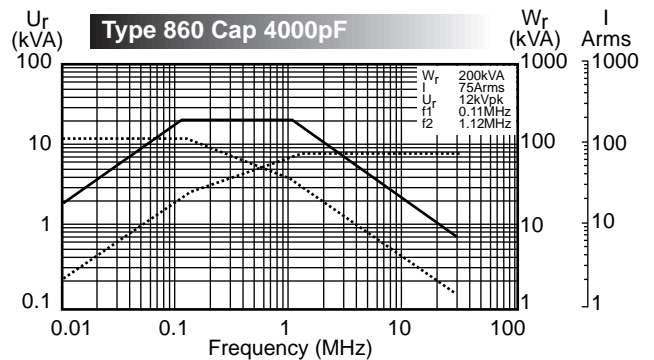
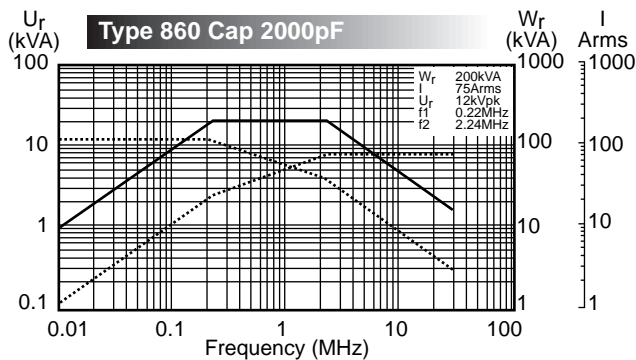
**Visit the RF Capacitor
Web-Site!**
www.rfcaps.com

All dimensions in mm



Temperature Coefficient -1300 ppm/°C

Type	CapValue		RatedVoltage			MaxPower Test50Hz kVA _r	MaxCurrent Rating Arms	A Rating mm	B Rating mm
	pF±20	AC+DCkV	Rated ACkVpk	AV kVrms					
860	2000	15	12	15	200	75	110	64	
860	3000	15	12	15	200	75	135	79	
860	4000	15	12	15	200	75	165	89	



--- I U_r — W_r Ambient Temperature 30°C