



Setting the **Standard** for **Shielding**.™

# MASACH TECH™

## 1994-2019..



Masach™ specializes in board level EMI/RFI shielding design and production for small, medium and large scale runs. Founded in 1994, Masach™ is a globally recognized and leading supplier of some of the world's largest electronic companies, driven by highest quality customer service with uncompromised product performance.

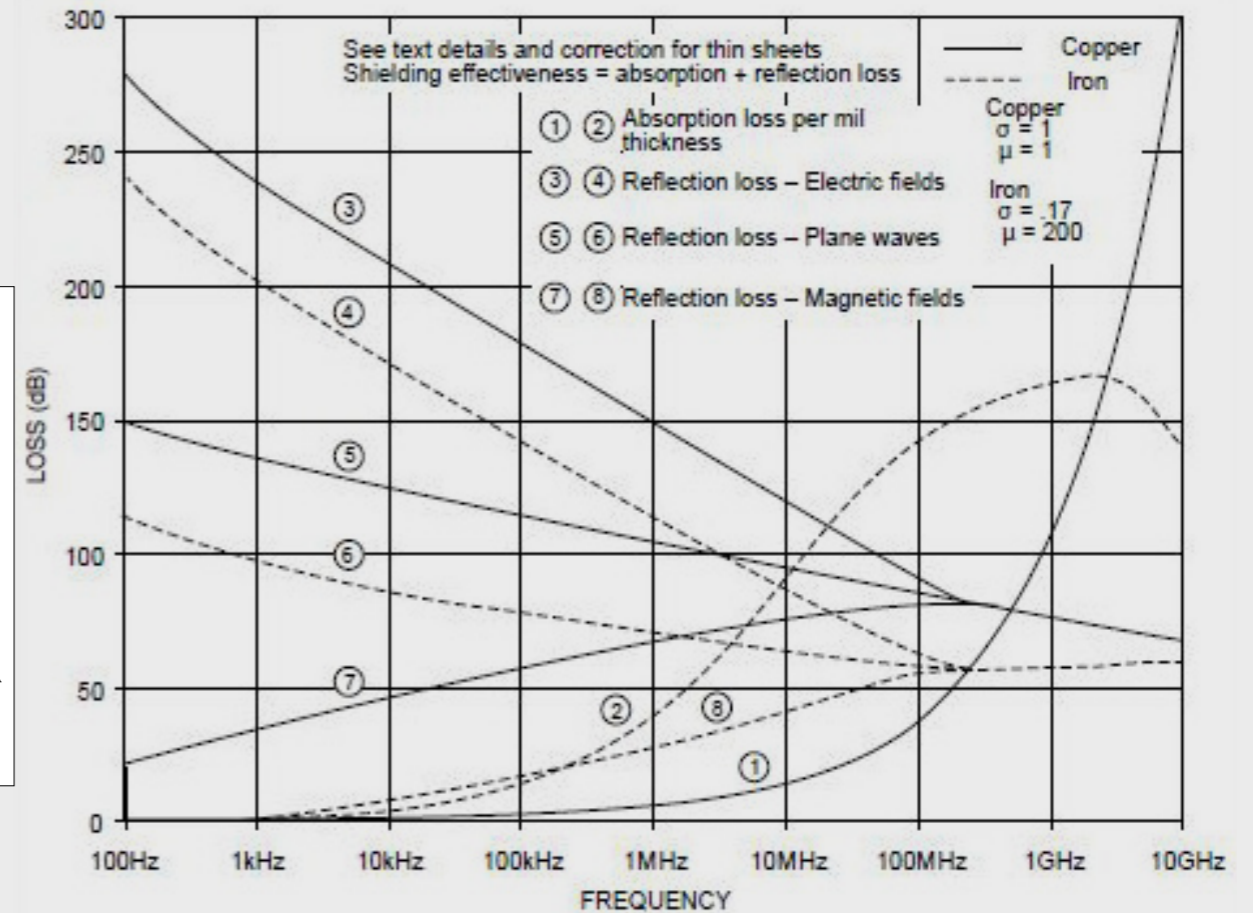
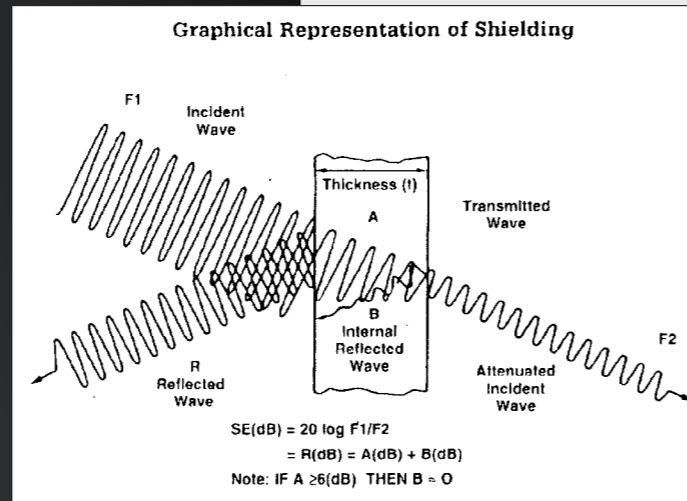
# MASACH TECH™

## FIELDS OF INDUSTRY



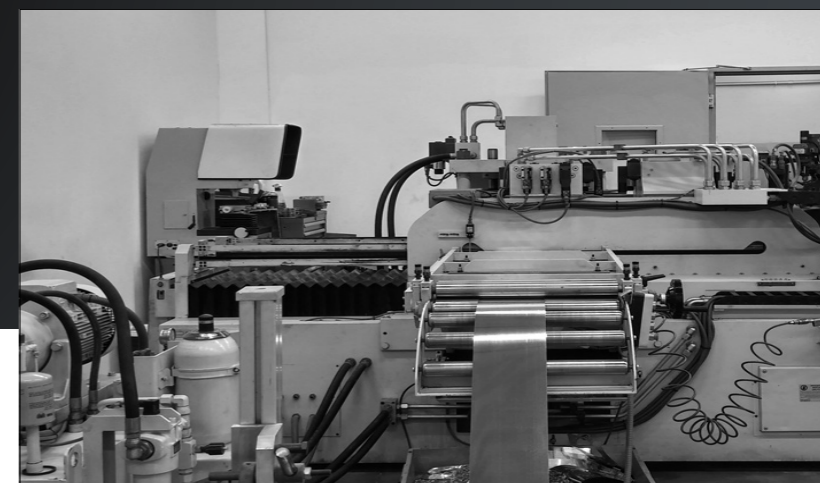
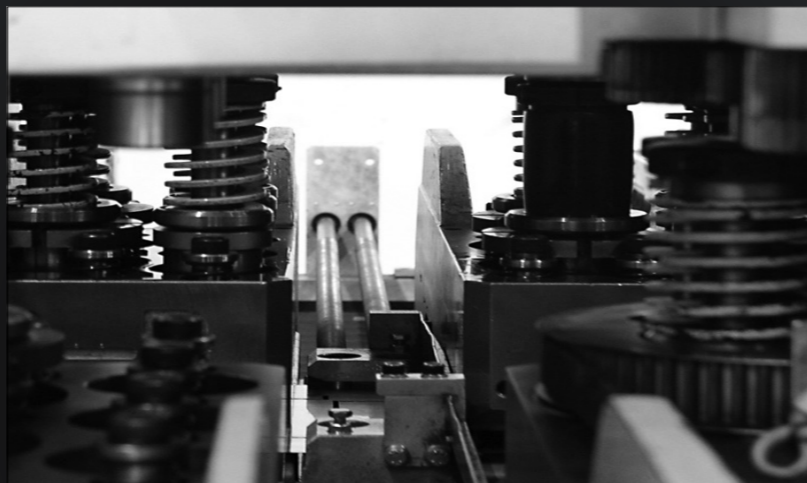
Masach™ remains committed to meet the needs of every industry with the right board level EMI/RFI shielding solution for every challenge – Whether in automotive, computer, military, data communications, general electronics, medical equipment, network equipment, telecommunications or any high-tech industry.

# MASACH TECH™ ELEMENTARY EMI/RFI SHIELD THEORY



Electronic devices give off electromagnetic emissions, as a by-product of electrical or magnetic activity, such emissions can interfere with the operation of other devices. Masach product range is designed to meet the electronic industries, ever growing high frequency printed circuits and RF applications.

# MASACH TECH™ TECHNOLOGY & PRODUCTION CAPABILITIES



Every step of the production cycle, from raw materials and design to packaging and shipping, is meticulously executed under one roof leveraging dedicated hydraulic presses, cutting-edge tool room assemblies, forming operations and more:

- » Innovative CNC Technology for prototyping and small to medium production runs – We use the benefits of traditional CNC punching such as fast setups and standard tooling, in the thin gage material spectrum.
- » Press-Tooling / In-house Tool Manufacturing for high volume production runs – Progressive tooling is designed and assembled in-house and together with automatic press machines enables us to accommodate high volume demands.
- » High Precision 3D Laser Technology – Masach™ advanced 3D Laser Cutting Technology offers high precision 3D cutting of formed or bent Standard shields made of thin gage materials, which allows quick and accurate solutions for intricate & complex engineering designs of drawn shields.

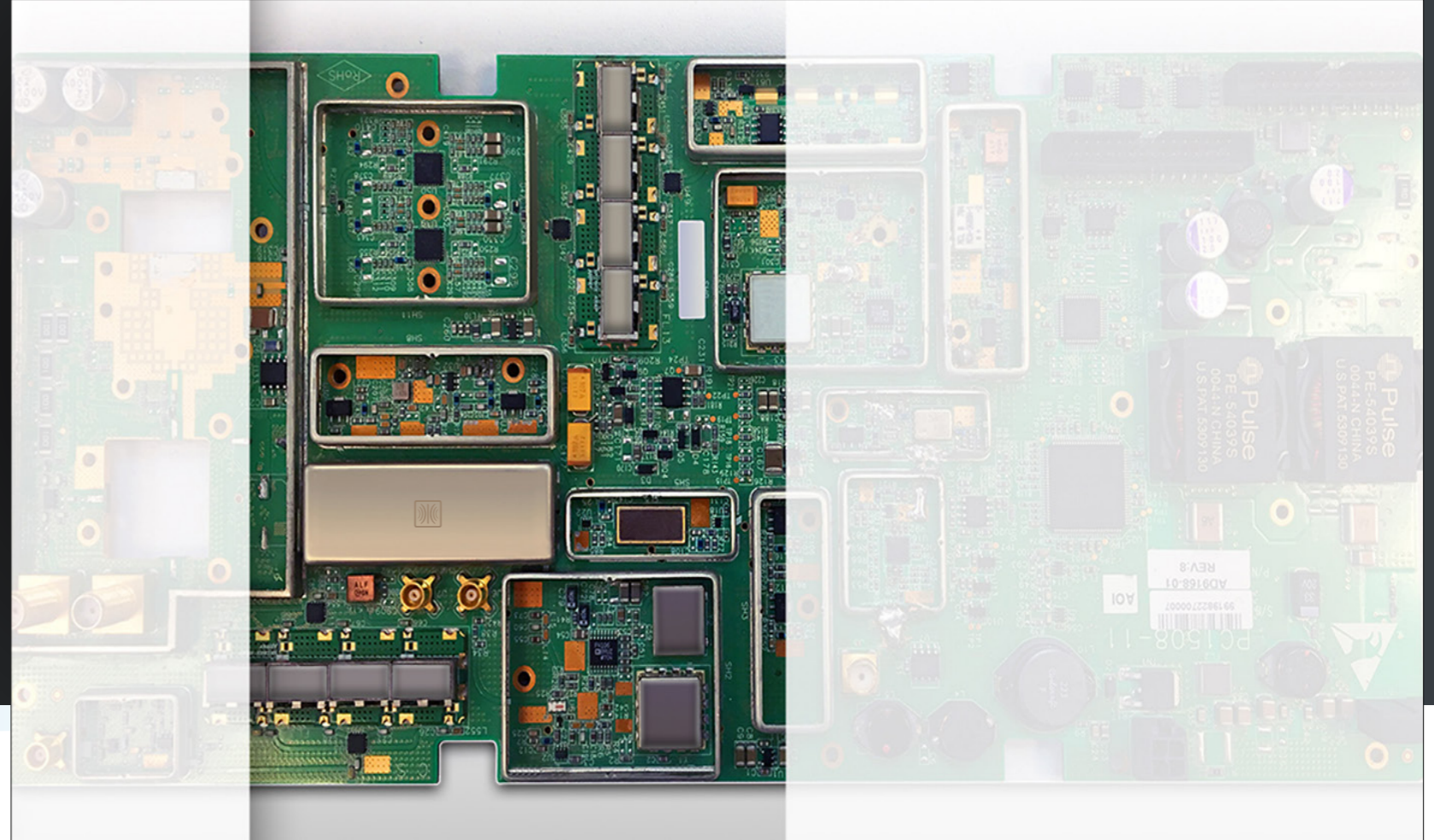
# STANDARD DRAWN EMI/RFI SHIELDS HIGH PERFORMANCE EMI/RFI SHIELDS!

*Seamless EMI/RFI Shields  
for a higher level of protection!*

Setting the Standard for Shielding™, Masach™ brings twenty five years of know-how and expertise into every standard shield produced. Our ever-growing selection of standard EMI/RFI shields is the largest in the industry, saving our customers precious time and money while catering to the electronic industry's growing high frequency and RF applications. With emphasis on technology and design, Masach™ drawn EMI/RFI shields boast top performance across the metrics, featuring a seamless protective cage, robust construction, optimal planarity and two-piece shield design.

# STANDARD DRAWN EMI/RFI SHIELDS HIGH PERFORMANCE EMI/RFI SHIELDS!

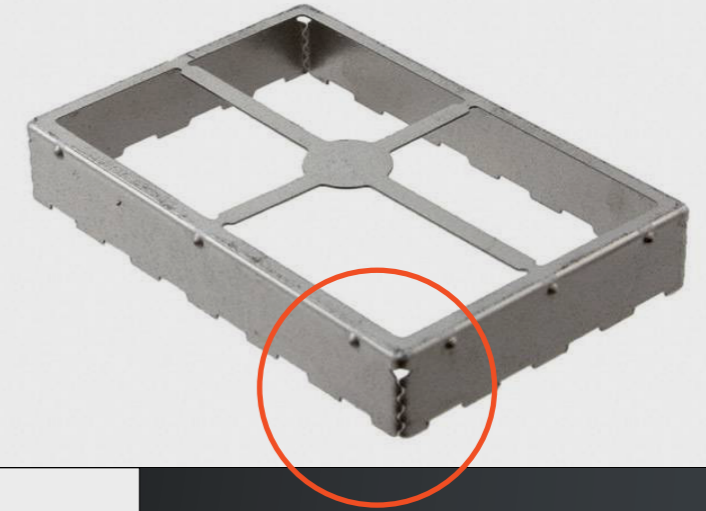
*Seamless EMI/RFI Shields  
for a higher level of protection!*



Most conventional EMI/RFI shields are produced by bending the frames and covers, leaving slits for dust and interference. Masach™ unique fabrication process utilizes drawn frames and snap on covers to produce a seamless, more hermetic shield that is as durable as it is effective. In contract to regular bent frames & covers which can be manufactured in single units by manual process, Masach™ Drawn EMI/RFI Shields shields must be tooled.

# STANDARD DRAWN EMI/RFI SHIELDS HIGH PERFORMANCE EMI/RFI SHIELDS!

*Seamless EMI/RFI Shields  
for a higher level of protection!*



**Regular Bent Shield**



**Masach™ Seamless Protective EMI/RFI Shield**

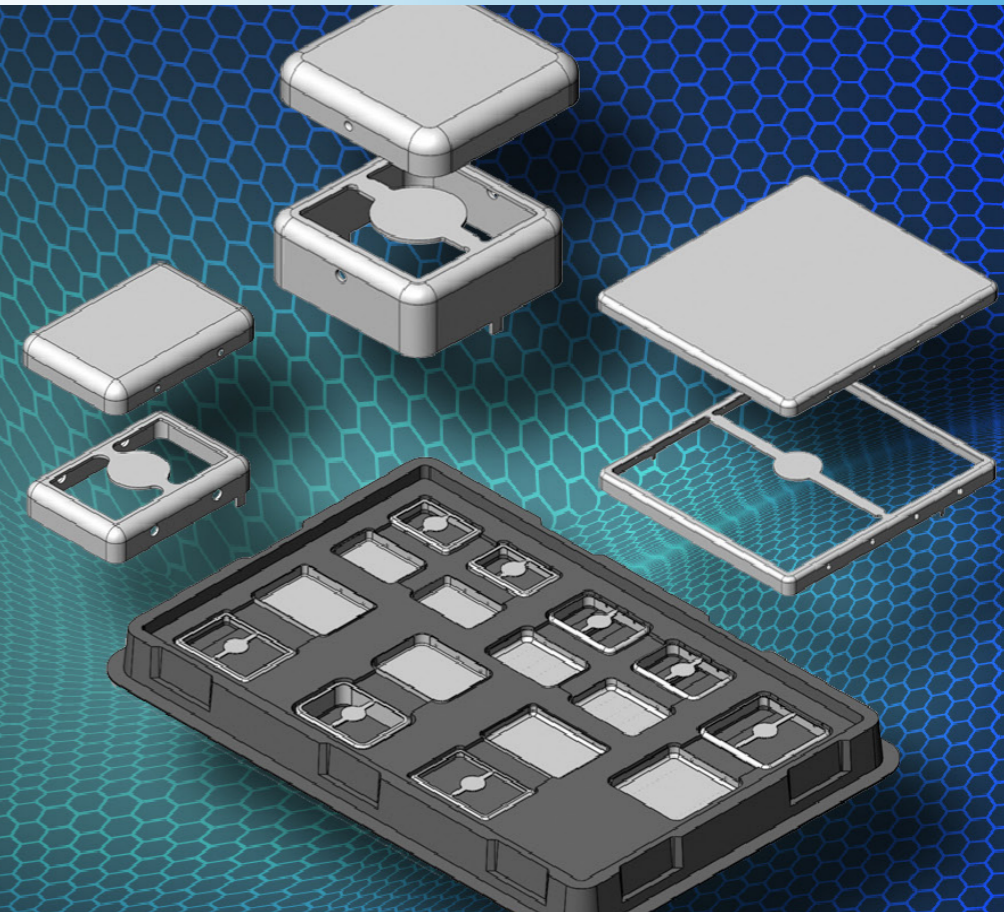
#### Masach Drawn EMI/RFI Shields Features & Benefits:

- » Seamless Protective Cage for higher shielding effectiveness
- » Optimal Planarity for higher yield on reflow soldering
- » Solid Construction to resist dents and warps
- » Two-piece Shield Design enables to repair components without removing the shield, saving time and reducing repair damage



# STANDARD DRAWN EMI/RFI SHIELDS COMPREHENSIVE LIBRARY OF TWO-PIECE SHIELDS

*Largest Selection of Shields  
in the Electronics Industry!*

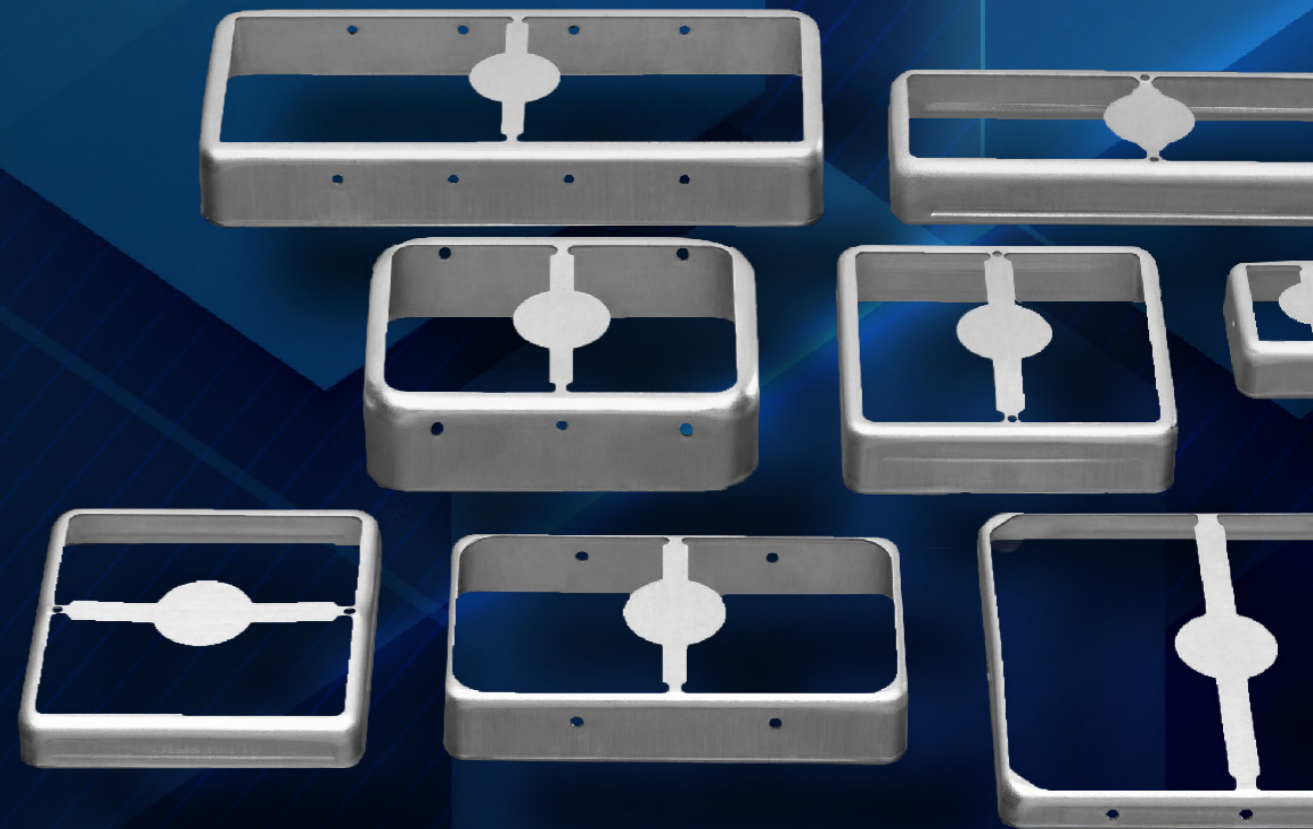


Masach™ offers the largest selection of standard drawn EMI/RFI shields in the electronics industry. Our ever-growing range of sizes delivers more flexibility in surface mount configurations where interference may occur or is identified during the board design phase. The highly reliable two-piece design (frame and cover) accommodates virtually any surface mount application.

<https://www.masach.com/products/drawn-rf-shielding-emi-shields.html>

# STANDARD DRAWN EMI/RFI SHIELDS FAST AND ECONOMICAL EMI/RFI SHIELDS

*Off-the-Shelf, In-stock  
SMD Compatible!*



Masach™ standard shields saves on custom design costs, doing away with the need to produce expensive prototypes for evaluation, as well as significantly reduces delivery times. Our standard drawn EMI/RFI shields consist of tin-plated steel alloys, commonly used for board-level shielding due to their exceptional mechanical formability, environmental compliance, and relative low cost.

Engineers taking part in the board design phase can take advantage of the information concerning all mechanical aspects of Masach™ shields, conveniently available for download (PDF datasheets and CAD files), from the website product page.

<https://www.masach.com/products/drawn-rf-shielding-emi-shields.html>

# MASACH TECH<sup>™</sup> SMT/SMD PACKING EMI/RFI SHIELDS

*Off-the-Shelf, In-stock  
SMD Compatible!*



We support international automatic assembly placement technology. Our regular orders are supplied by default on SMT/SMD packing trays, Tape and Reel packaging is optional upon request.

# MASACH TECH<sup>TM</sup> QUALITY AND ENVIRONMENTAL CONCERN

*Quality Assurance  
& Green Policy*



#### **ISO 9001:2015 Quality Assurance**

We provide our customers with highest quality products and timely delivery, managed by a state of the art ERP system in accordance with ISO 9001:2015 quality standards.

#### **RoHS & Reach Compatible**

We use only fabricated materials that are RoHS and Reach compatible, with standards continually updated. COC of base material used is available upon request..



Setting the **Standard** for **Shielding**.™

[www.masach.com](http://www.masach.com)

