



# WLLA2025A

## 2.0 – 2.5 GHz LOW NOISE WIDE BAND LIMITER AMPLIFIER

REV A  
October 2019

### Key Features

- 2.0 ~ 2.5 GHz
- **0.70 dB Noise Figure**
- 20.0 dBm Output IP<sub>3</sub>
- 30.0 dB Gain
- 9.0 dBm P<sub>1dB</sub>
- 1.5:1 VSWR
- **Built-in Limiter**
- Unconditional Stable
- **MADE IN USA**



### Applications

- 50 Ohm Impedance
- Mobile Infrastructures
- 3G
- ISM Band
- Measurement
- Fixed Wireless



### Absolute Maximum Ratings

Parameters	Units	Rating
DC Power Supply Voltage	V	-0.5, 6.0
Drain Current	mA	100
Total Power Dissipation	mW	500
Input CW RF Power	dBm	30
Input Pulse RF Power, 0.8% Duty Cycle, 1 mS Period	dBm	40
Channel Temperature	°C	150
Storage Temperature	°C	-55~125
Operating Temperature	°C	-40~85
Thermal Resistance	°C/W	220

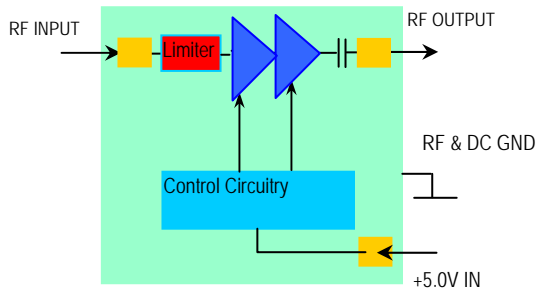
Operation of this device above any one of these parameters may cause permanent damage.



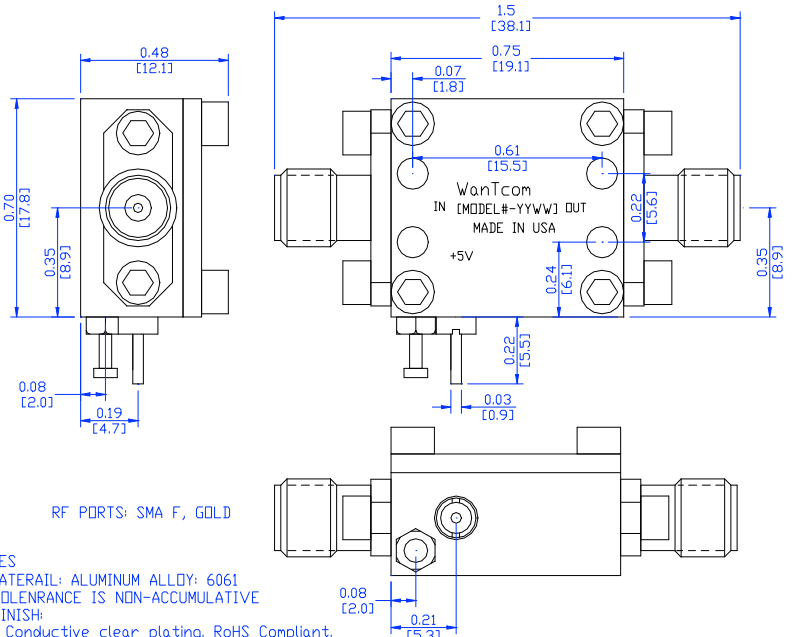
### Specifications

Summary of the electrical specifications WLLA2025A at room temperature

Index	Testing Item	Symbol	Test Constraints	Min	Nom	Max	Unit
1	Gain	S <sub>21</sub>	2.0 – 2.5 GHz	28	30	32	dB
2	Gain Variation	ΔG	2.0 – 2.5 GHz		+/- 0.7	+/- 1.0	dB
3	Input VSWR	SWR <sub>1</sub>	2.0 – 2.5 GHz		1.5:1	1.6:1	Ratio
4	Output VSWR	SWR <sub>2</sub>	2.0 – 2.5 GHz		1.5:1	1.6:1	Ratio
5	Reverse Isolation	S <sub>12</sub>	2.0 – 2.5 GHz		20		dB
6	Noise Figure	NF	2.0 – 2.5 GHz		0.70	0.95	dB
7	Output 1dB Gain Compression Point	P <sub>1dB</sub>	2.0 – 2.5 GHz	7	9		dBm
8	Output-Third-Order Interception Point	IP <sub>3</sub>	Two-Tone, P <sub>out</sub> = 0 dBm each, 1 MHz separation	18	20		dBm
9	DC Current Consumption	I <sub>dd</sub>	@ 21 °C		40		mA
10	DC Power Supply Voltage	V <sub>dd</sub>		+4.7	+5.0	+5.3	V
11	Thermal Resistance	R <sub>th,c</sub>	Junction to case			220	°C/W
12	Operating Temperature	T <sub>o</sub>	Case temperature at the bottom of the housing	-40		+85	°C
13	Maximum Input CW RF Power	P <sub>IN, MAX</sub>	DC – 13 GHz			30	dBm
14	Input Pulse RF Power		0.8% Duty Cycle, 1 mS Period			40	dBm
15	Spurious	P <sub>spur</sub>	DC – 13 GHz	-70			dBc



### Outline, WP-30 Housing



### Ordering Information

Model Number	WLLA2025A
--------------	-----------

Specifications and information are subject to change without notice.



**WLLA2025A**

**2.0 – 2.5 GHz LOW NOISE WIDE BAND LIMITER AMPLIFIER**

REV A  
October 2019

Typical Performance

Preliminary

---

Specifications and information are subject to change without notice.

WanTcom, Inc \* Phone 01 952 448 6088 \* FAX: 01 952 448 7188 \* e-mail: [sales@wantcominc.com](mailto:sales@wantcominc.com) \* Web site: [www.wantcominc.com](http://www.wantcominc.com)

2/3



## Application Notes

### A. SMA Torque Wrench Selection

Always use a torque wrench with 5 ~ 6 inch-lb coupling torque setting for mating the SMA cables to the amplifier. Never use torque more than 8 inch-lb wrench for tightening the mating cable connector to the amplifier connector. Otherwise, the permanent damage will occur to the SMA connectors of the amplifier. 8710-1582 (5 inch-lb) is one of the ideal torque wrench choice from Keysight Technology.

### B. Mounting the Amplifier

Use three pieces of #2-56 with longer than 9/16" screws for mounting the amplifier on a metal-based chase. Flat and spring washers are needed to prevent the screw loosening for shock and vibration. Always use the appropriate torque setting of the power screwdriver to mount the screws.

### C. Soldering DC Power Supply Wires

Always turn off the DC power supply of +5.0V when connect the DC cables to the amplifier. Only turn on the power supply after the correct connections and +5.0V DC voltage are confirmed. Any accidentally short the live +5.0V to the ground while applying DC cable to the DC feed thru pin may damage the amplifier.

The AWG of 18 ~ 24 insulated wires are recommended for the DC cables. Red and Black color wires are recommended for +5.0V and its return for easier identification of the polarity to avoid the wrong DC bias. Only 3/4 to 1 turn wrap around the feed thru pin and ground turret per the IPC standard.

Do not use large soldering iron tip with more than 750 degree Fahrenheit to solder the wire and feed thru pin. Damage may occur to the feed thru. 0.010" size tip with 750 degree Fahrenheit temperature setting is suitable for the soldering works.

Repeat the process to solder the DC return wire on the ground turret. Higher temperature and larger tip can be used for this ground soldering.

\*\*\*\*\*